

**\*NOTICE TO ERECTOR\***

IF ANY CORRECTIVE WORK OR REPLACEMENT MATERIAL IS BELIEVED NECESSARY, THE STEEL FABRICATOR SHALL BE IMMEDIATELY ADVISED AND HIS AUTHORIZATION OBTAINED BEFORE ANY SUCH ACTION IS TAKEN ! ! ! !

		FIELD	✓	6-14-09		
		SHOP				
		APPR.	✓	6-8-09		
REV.	DATE	DESCRIPTION	PRINTS	NO.	DATE	NO. DATE

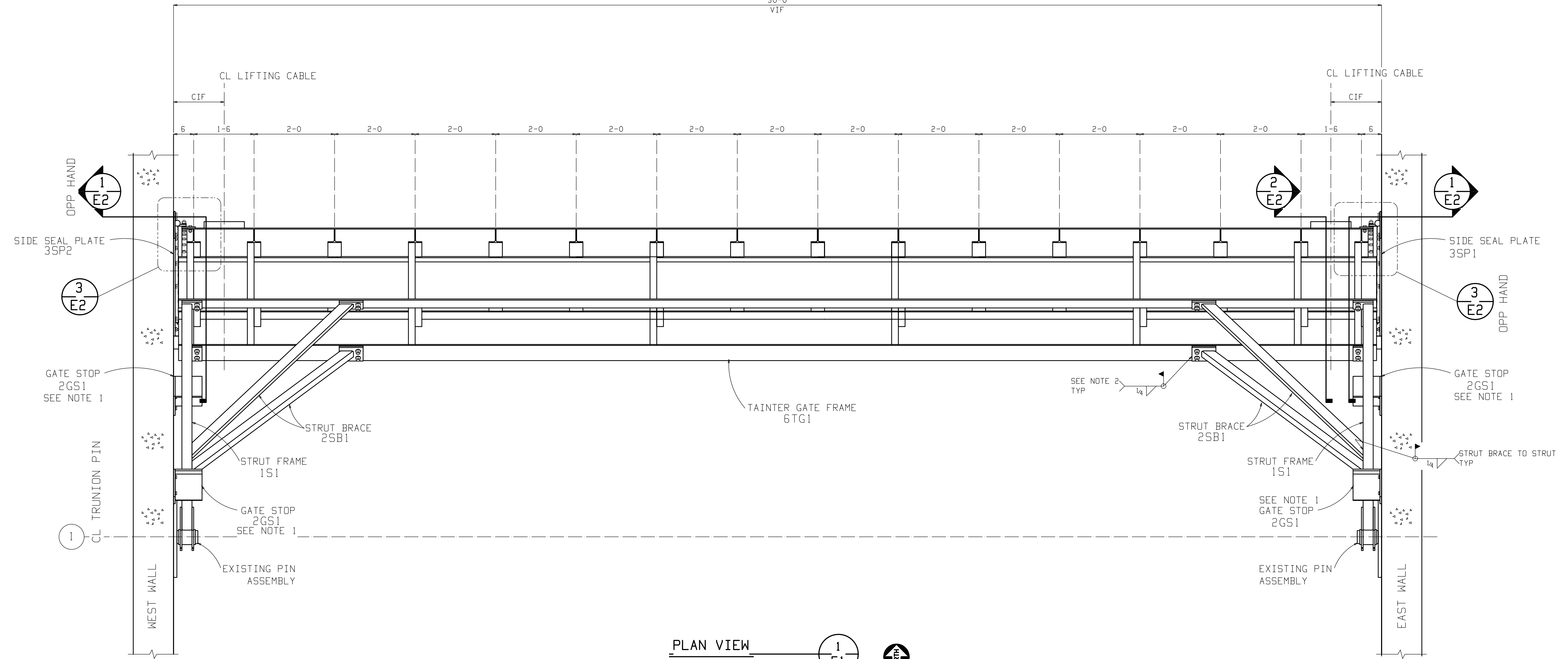
GATE SHOWN IN "CLOSED" POSITION.  
 CONCRETE WALLS AND FLOOR NOT SHOWN FOR CLARITY

JOB TANTIER GATE  
 LOCATION \_\_\_\_\_  
 CUSTOMER \_\_\_\_\_  
 DRWG. COVERS ISOMETRIC  
 DETAILER JMD \_\_\_\_\_ JOB # \_\_\_\_\_ DRWG. # \_\_\_\_\_  
 CHECKER AM \_\_\_\_\_ DATE 6-7-09 \_\_\_\_\_  
 PROJECT MANAGER \_\_\_\_\_

PLOT DATE/TIME: 23 Sep 2013 21:52:17

E-ISO

30-0  
VIF



PLAN VIEW  
REF

GATE SHOWN IN "CLOSED" POSITION.

NOTES)

- 1) LOCATE GATE STOPS AS REQ'D PER S2.1.  
ATTACH TO WALL WITH (4) 1/2" DIAx6 HILTI  
ADHESIVE (HY150, SS ROD) 4 1/2" EMBEDMENT.
- 2) STRUTS AND STRUT BRACES TO BE ATTACHED  
TO TAINTER GATE ASSEMBLY W/ 3/4" DIA A325  
TEMP ERECTION BOLT. FIELD WELD AS SHOWN.  
REMOVE BOLT AND PLUG HOLE WITH WELD,  
GRIND SMOOTH.

VIF= CONTRACTOR TO VERIFY DIMENSION IN FIELD

CIF= COORDINATE DIM WITH LOCATION OF EXISTING  
LIFTING HUBS

**\*NOTICE TO ERECTOR\***

IF ANY CORRECTIVE WORK OR REPLACEMENT  
MATERIAL IS BELIEVED NECESSARY, THE STEEL  
FABRICATOR SHALL BE IMMEDIATELY ADVISED  
AND HIS AUTHORIZATION OBTAINED BEFORE  
ANY SUCH ACTION IS TAKEN !!!!!

		FIELD	✓	6-14-09			
		SHOP					
		APPR.	✓	6-8-09			
REV.	DATE	DESCRIPTION	PRINTS	NO.	DATE	NO.	DATE

25 Sep 2013 21:52:17

JOB TAINTER GATE

LOCATION \_\_\_\_\_

CUSTOMER \_\_\_\_\_

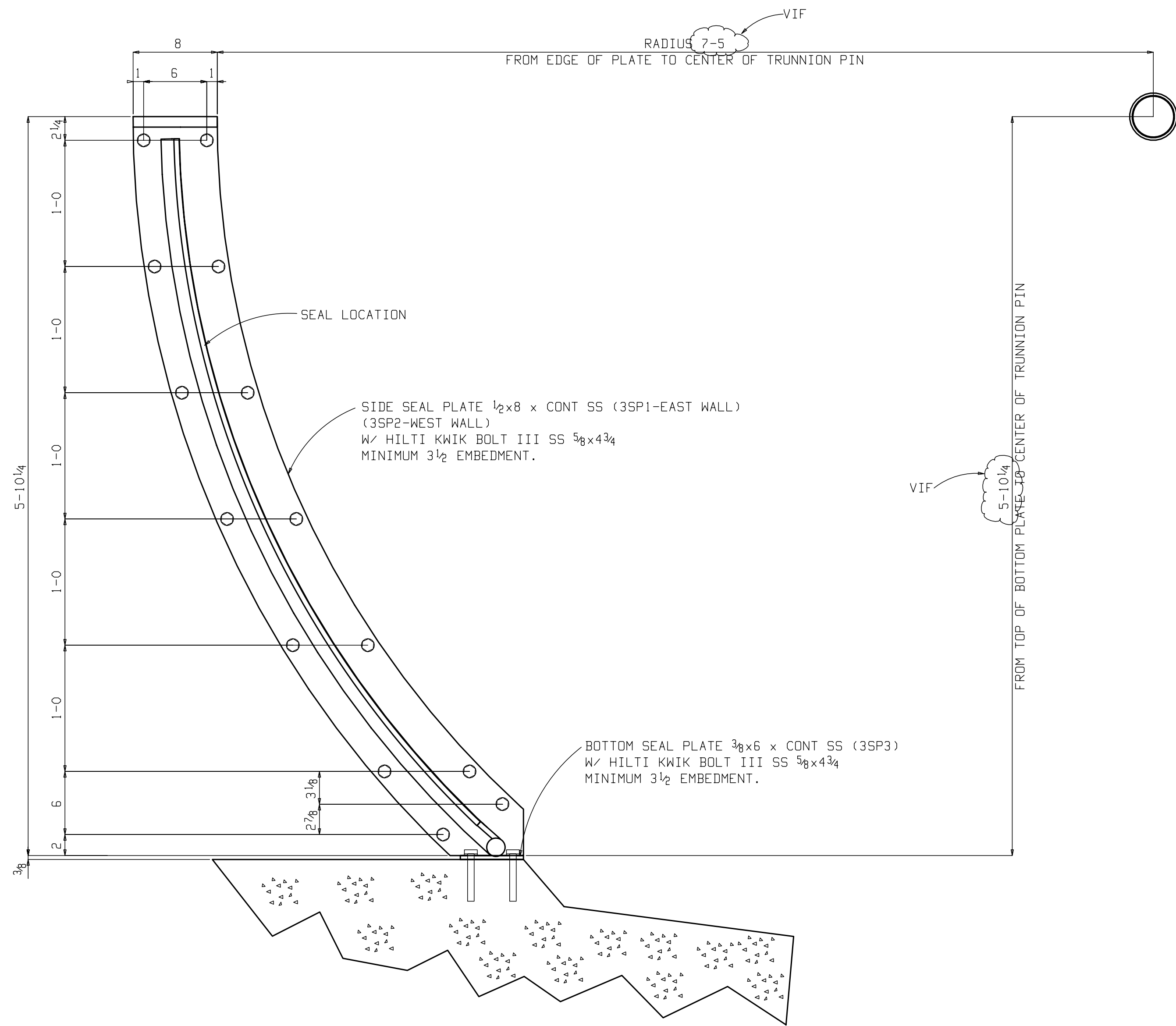
DRWG. COVERS PLAN VIEW

DETAILER JMD JOB # \_\_\_\_\_ DRWG. # \_\_\_\_\_

CHECKER AM DATE 6-7-09

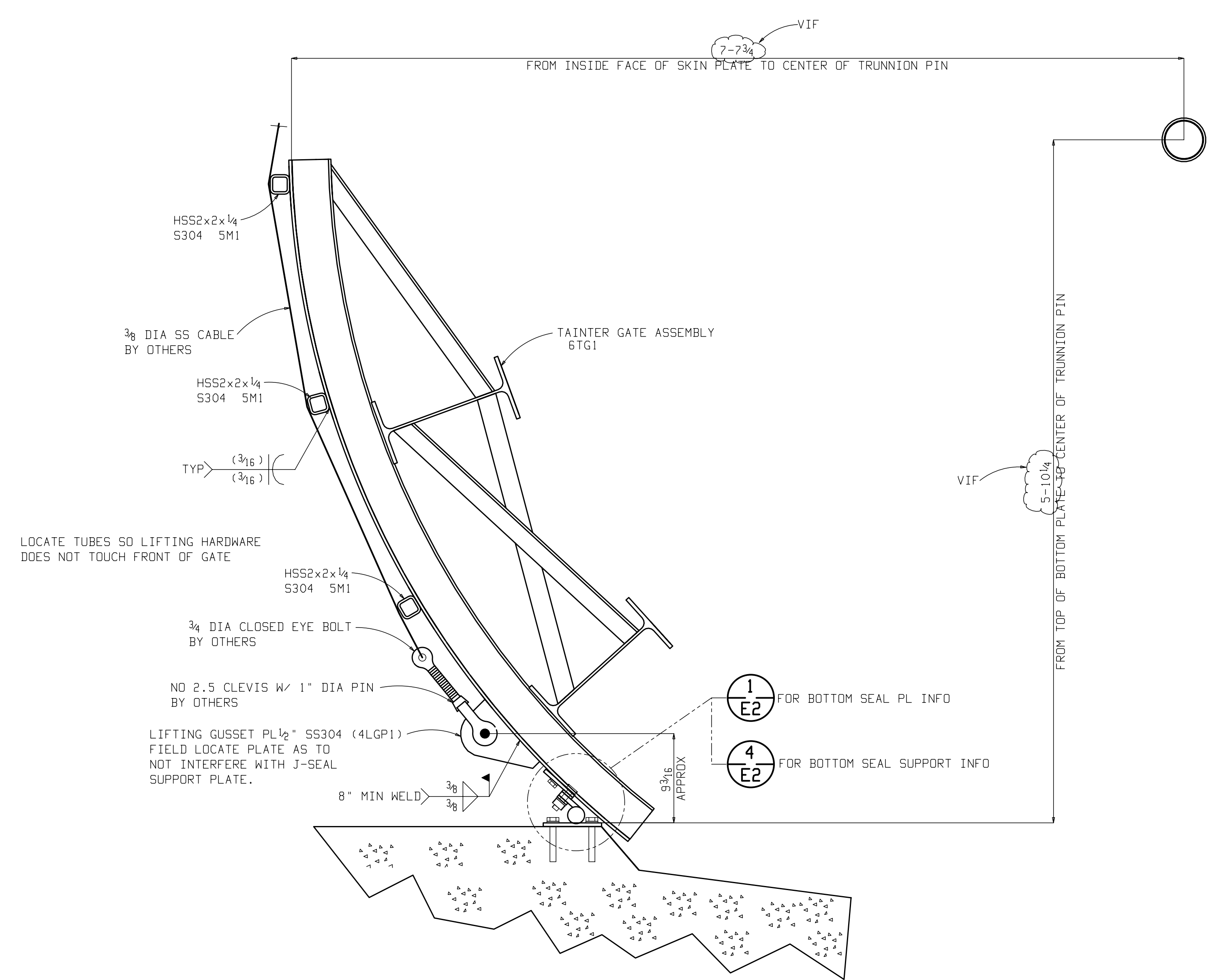
PROJECT MANAGER \_\_\_\_\_

**E1**

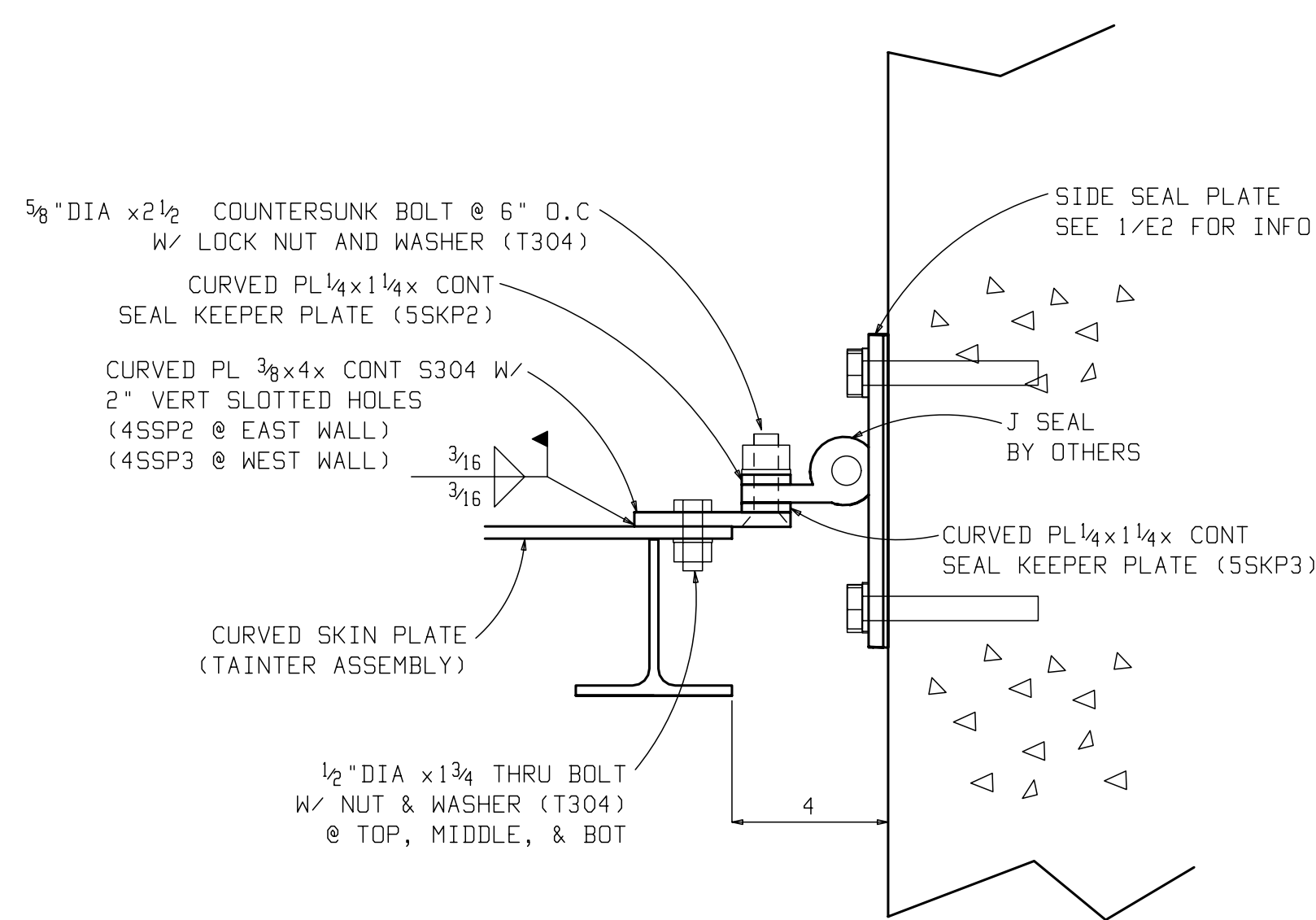


**SIDE & BOT SEAL PLATE** 1  
E2

SEE S3.0 FOR ADD'L INFO



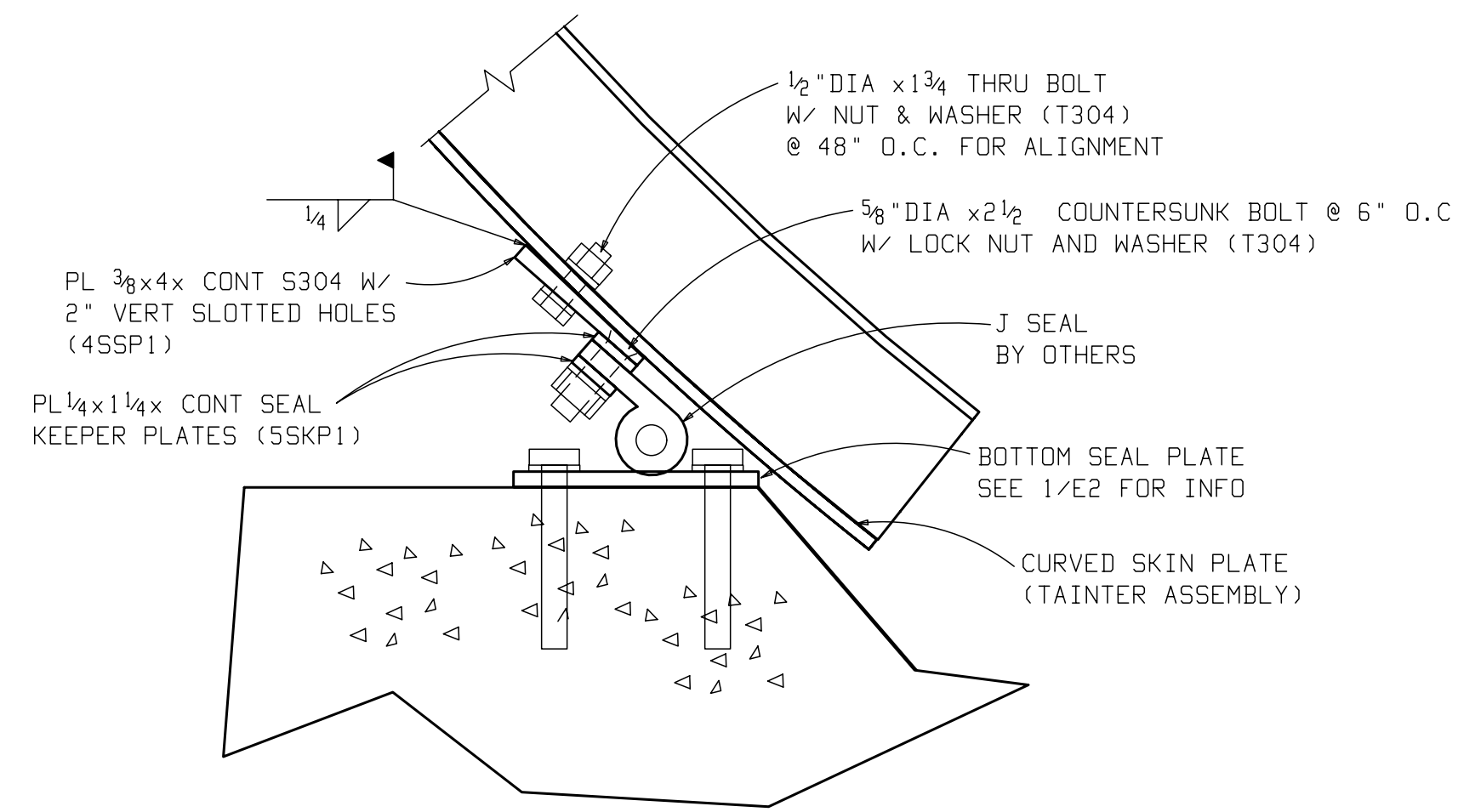
**MAIN SECTION** 2  
E2



**SIDE SEAL** 3  
E2

REF 4/S3.0

SEE 4/S3.0 FOR ADD'L INFO



**BOTTOM SEAL** 4  
E2

REF 5/S3.0

SEE 5/S3.0 FOR ADD'L INFO

SEE E1 FOR GENERAL NOTES

**\*NOTICE TO ERECTOR\***

IF ANY CORRECTIVE WORK OR REPLACEMENT MATERIAL IS BELIEVED NECESSARY, THE STEEL FABRICATOR SHALL BE IMMEDIATELY ADVISED AND HIS AUTHORIZATION OBTAINED BEFORE ANY SUCH ACTION IS TAKEN !!!!!

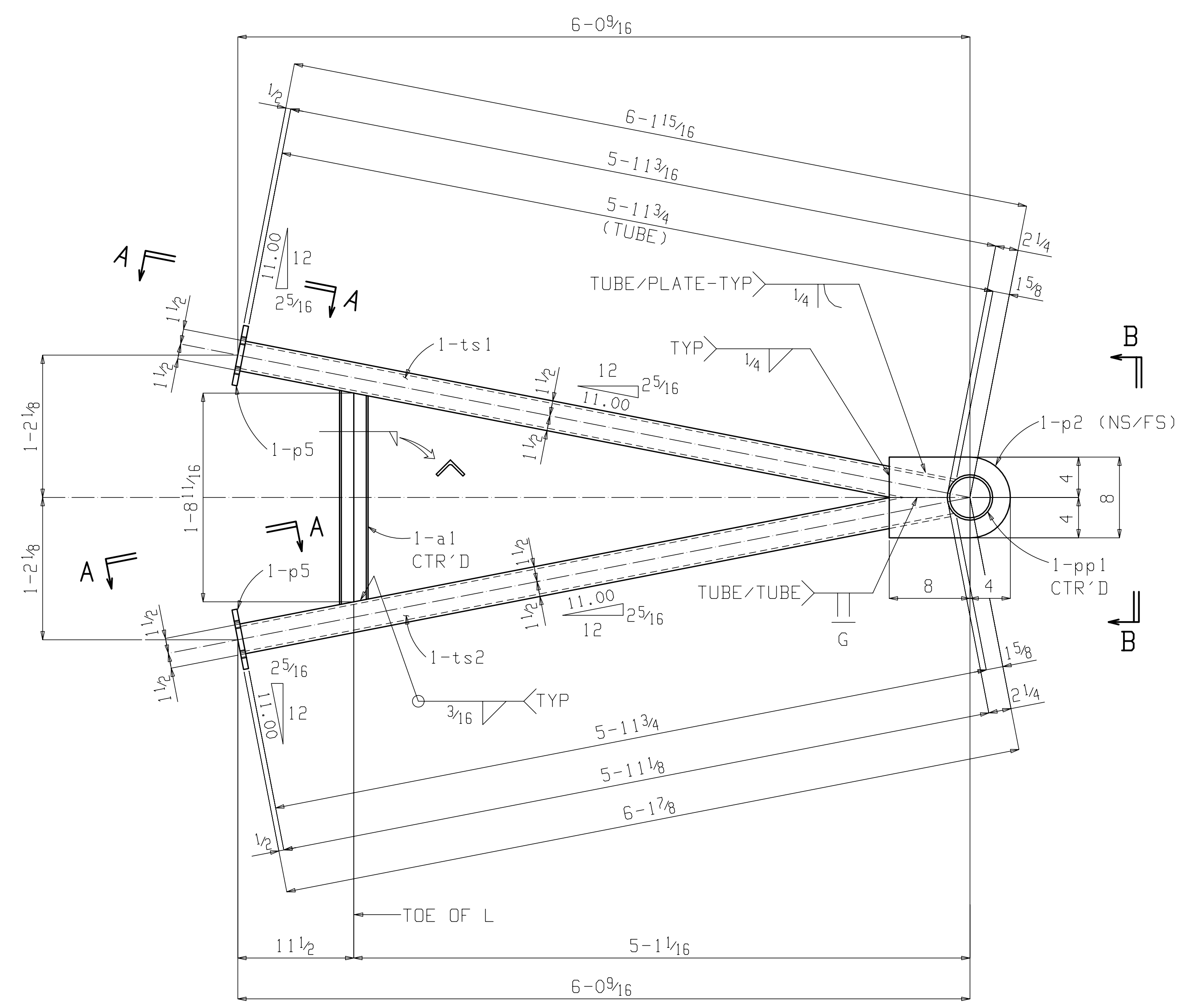
REV.	DATE	DESCRIPTION	PRINTS	NO.	DATE	NO.	DATE
			FIELD	✓	6-14-09		
			SHOP				
			APPR.	✓	6-8-09		

PLOT DATE/TIME: 23 Sep 2013 21:52:17	JOB: <b>TANTIER GATE</b>						
	LOCATION: _____						
	CUSTOMER: _____						
	DRWG. COVERS: <b>SECTIONS</b>						
	DETAILER: <b>JMD</b>	JOB #		DRWG. #			
CHECKER: <b>AM</b>	DATE: <b>6-7-09</b>		<b>E2</b>				
PROJECT MANAGER: _____							

BILL OF MATERIAL

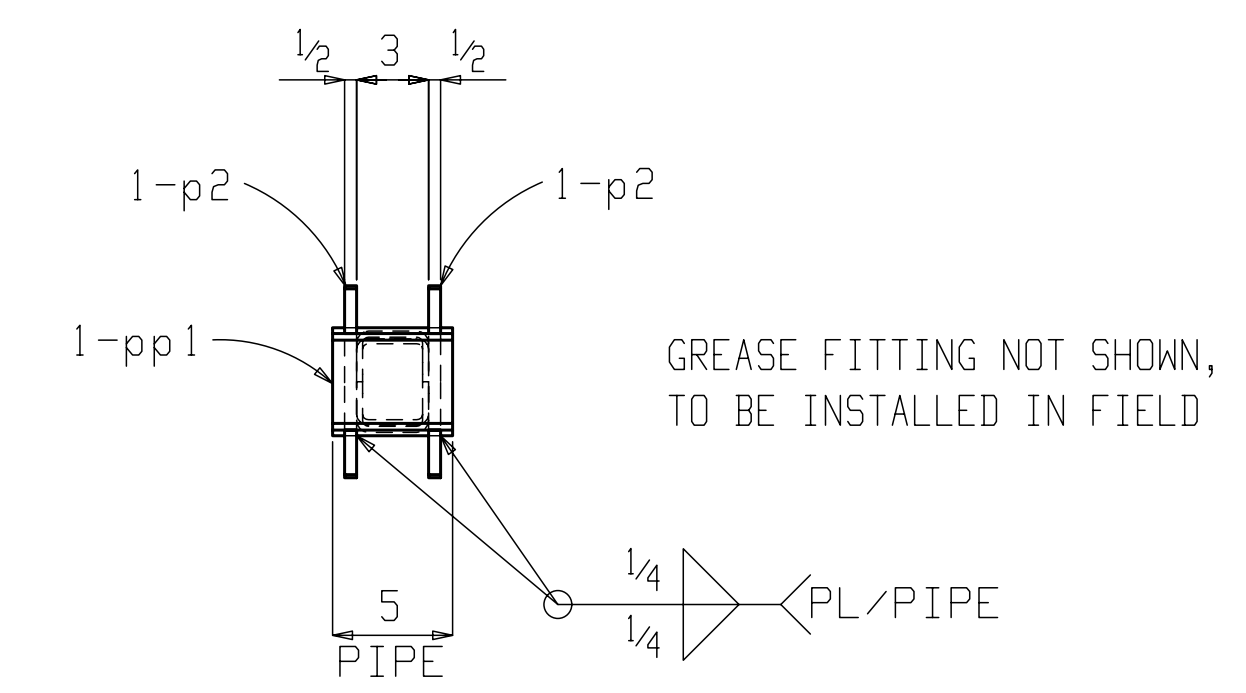
Seq Num	Quan. Total	Main Mark	Quan. Unit	Shape	Length	Minor Mark	Remarks	Steel Grade	Weight Total
1	2	1S1		STRUT FRAME					290
	2		1	HSS3x3x1/4	5 11 3/4	ts2		A500B	104
	2		1	HSS3x3x1/4	5 11 3/4	ts1		A500B	104
	2		1	PIPE 4 STD	0 5	pp1		A53	9
	2		1	L2x2x1/4	1 9 1/4	a1	B2E	A36	11
	4		2	PL 1/2x8	1 0	p2		A36	42
	4		2	PL 1/2x6	0 6	p5		A36	20

SEE GATHER DRAWINGS FOR SUB-MAT'L LAYOUT DIMENSIONS.



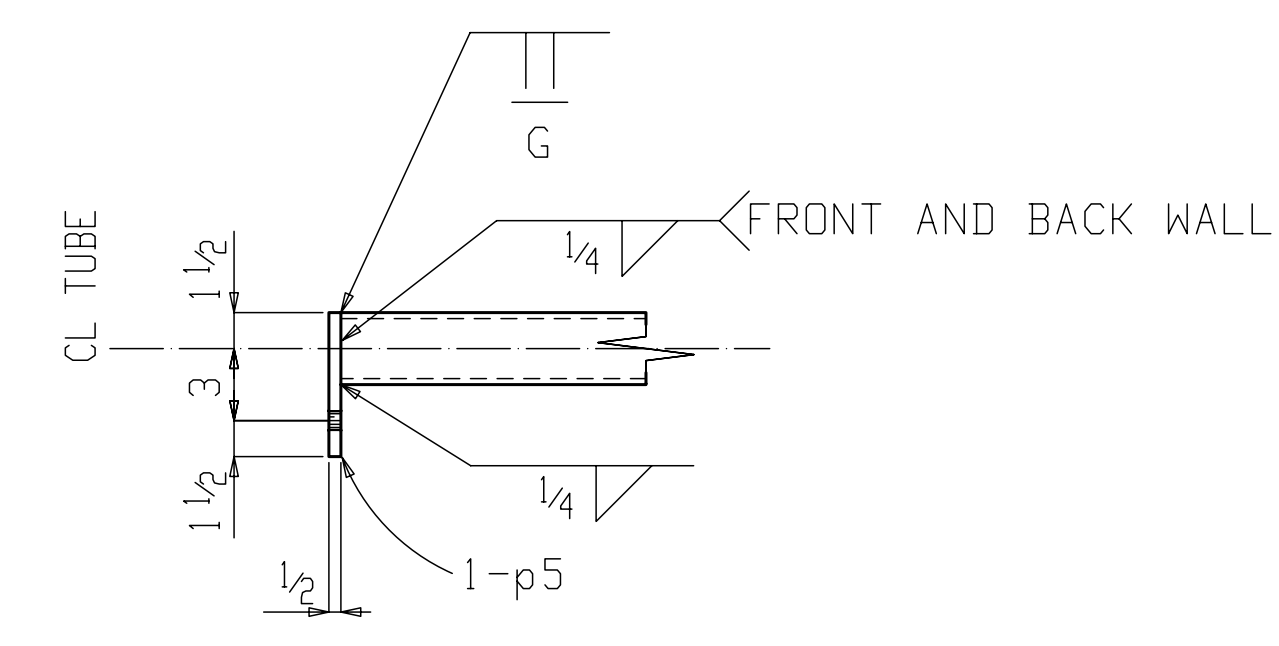
**2 STRUT FRAMES 1S1**

SHOP NOTE:  
 COMPLETE PLATE/PIPE WELD BEFORE FITTING TO TUBE ASSEMBLY. GRIND TUBES TO CLEAR WELD AS REQ'D.  
 SEAL WELD ASSEMBLY AS REQ'D.



**Section B-B**

FABRICATOR:  
 COORDINATE WITH CONTRACTOR TO VERIFY EXISTING PIN FITS IN 4" PIPE

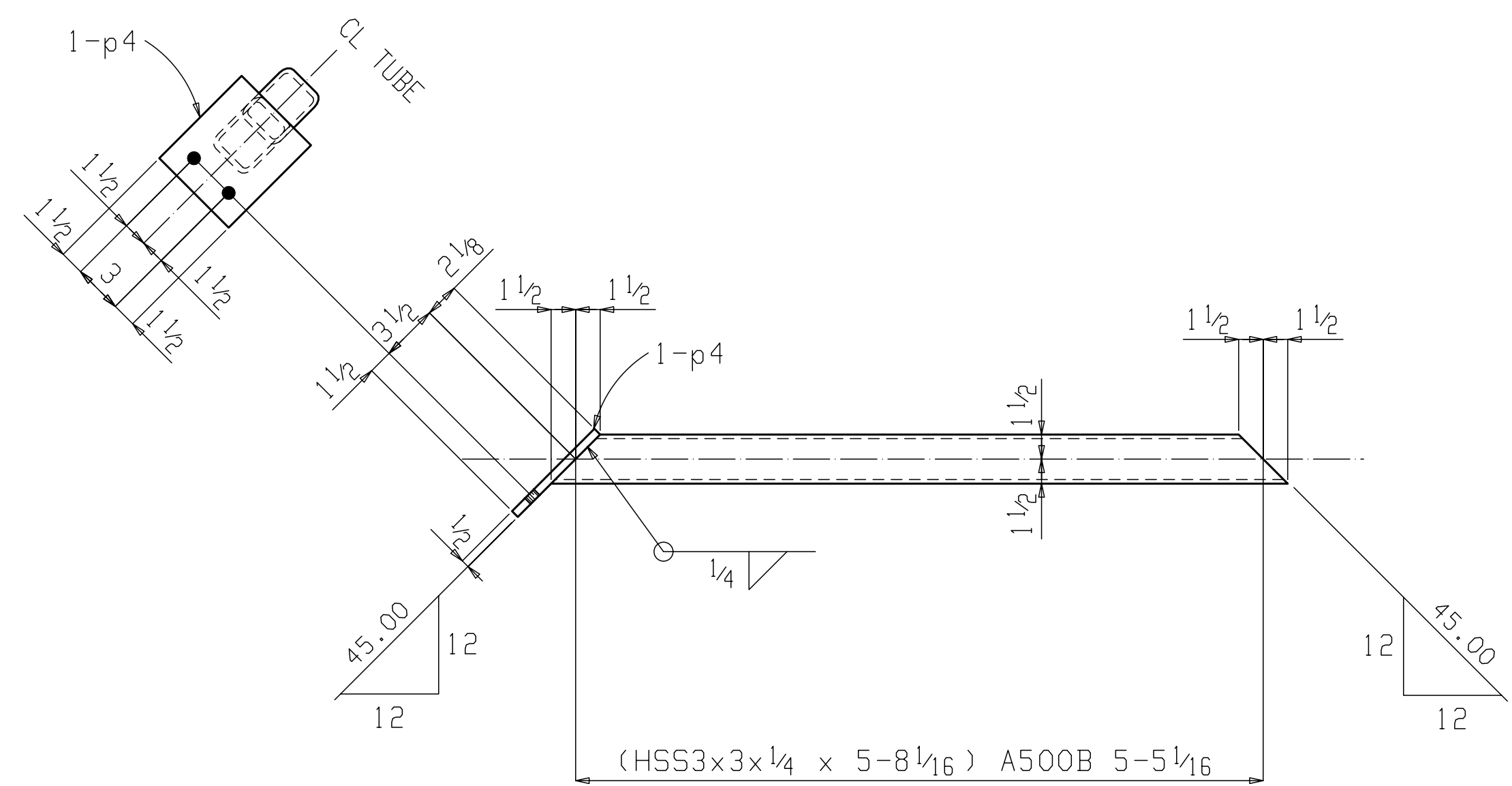


**Section A-A**

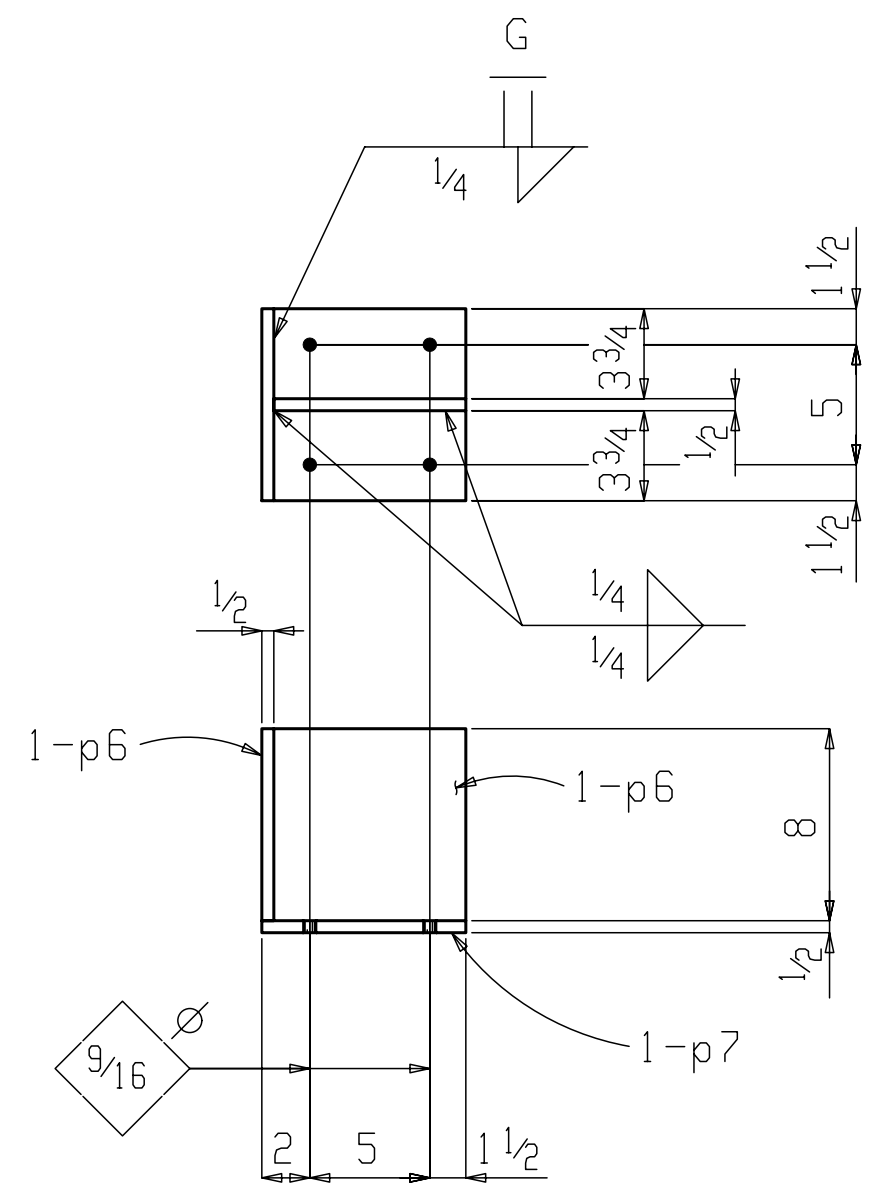
Total weight : 290

REFERENCE DRWG./LOCATION	E1-E2	FIELD			
MATERIAL (UNLESS NOTED)	A36	SHOP	✓	6-14-09	
		APPR.	✓	6-8-09	
SURFACE PREPARATION	SP3	REV.	DATE	DESCRIPTION	PRINTS NO. DATE NO. DATE
SHOP PAINT	TNEMEC SERIES 66	JOB	TAINTER GATE		
		LOCATION			
		CUSTOMER			
SHOP CONNECTIONS/ELECTRODES	E70XX L.H.	DRWG. COVERS	STRUT ASSEMBLY		
ALL SHOP BOLTS TO BE HAND TIGHT		DETAILER	JMD	JOB #	DRWG. #
FIELD CONNECTIONS		CHECKER	AM	DATE	6-7-09
HOLES (U.N.)		PROJECT MANAGER			F1

PLOT DATE/TIME: 29 Sep 2013 21:32:16



4 STRUT BRACES 2SB1



4 GATE STOPS 2GS1

**BILL OF MATERIAL**

Seq Num	Quan. Total	Main Mark	Quan. Unit	Shape	Length	Minor Mark	Remarks	Steel Grade	Weight Total
1	4	2SB1		STRUT BRACE					215
	4		1	HSS3x3x1/4	5	8 1/16	2SB1 B2E	A500B	191
	4		1	PL 1/2x6	0	7 1/8	p4	A36	24
1	4	2GS1		GATE STOP					111
	4		1	PL 1/2x8	0	8 1/2	p7	A36	38
	8		2	PL 1/2x8	0	8	p6	A36	73

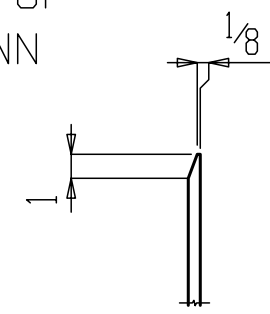
SEE GATHER DRAWINGS FOR  
SUB-MAT'L LAYOUT DIMENSIONS.

Total weight : 326

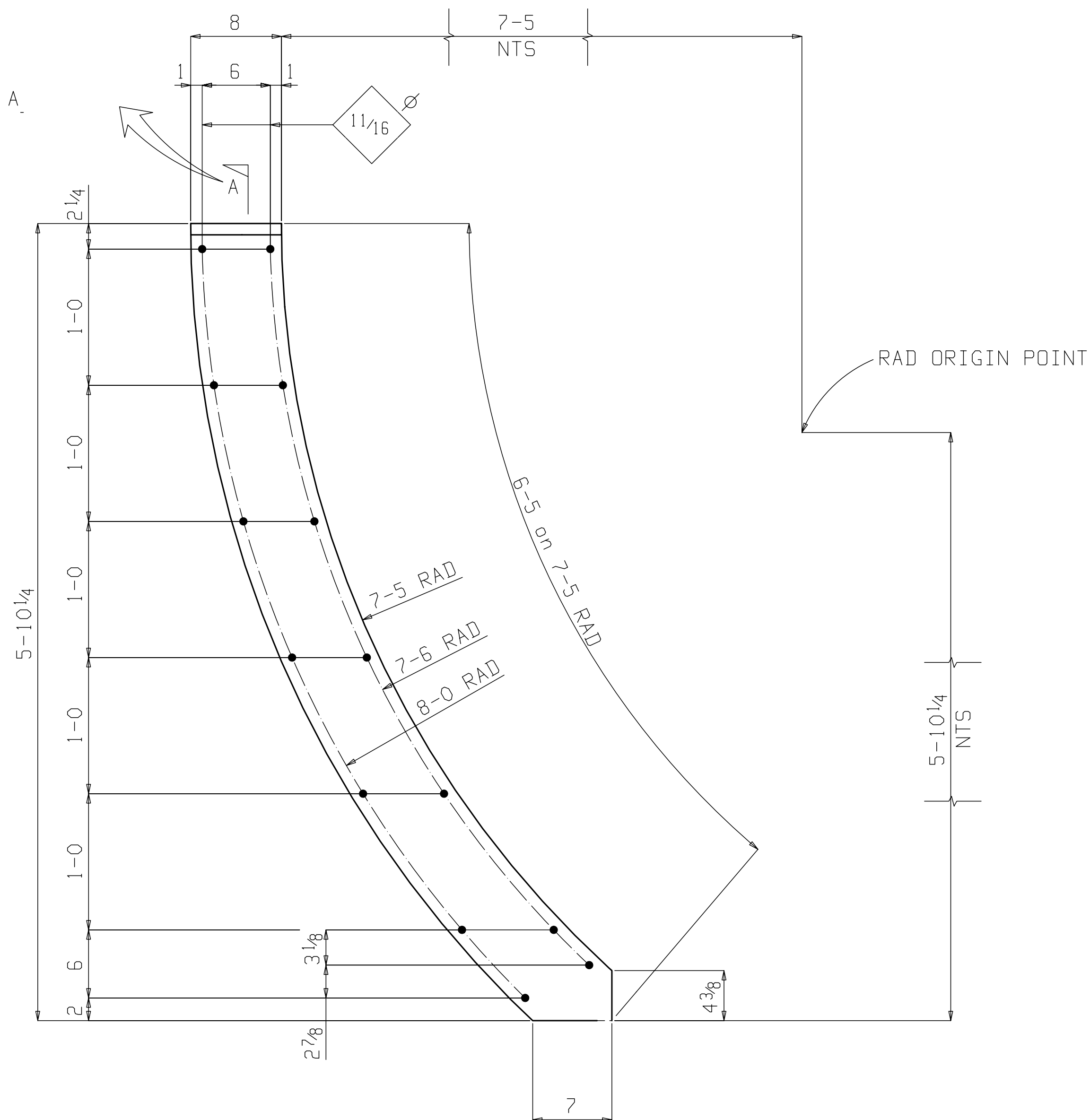
REFERENCE DRWG./LOCATION <b>E1-E2</b>	FIELD	NO.	DATE	NO.	DATE
MATERIAL (UNLESS NOTED) <b>A36</b>	SHOP	<input checked="" type="checkbox"/>	6-14-09		
	APPR.	<input checked="" type="checkbox"/>	6-8-09		
SURFACE PREPARATION <b>SP3</b>	REV.	DATE	DESCRIPTION	PRINTS	NO.
SHOP PAINT <b>TNEMEC SERIES 66</b>	JOB	<b>TAINTER GATE</b>			
SHOP CONNECTIONS/ELECTRODES <b>E70XX L.H.</b> ALL SHOP BOLTS TO BE HAND TIGHT	LOCATION				
FIELD CONNECTIONS	CUSTOMER				
HOLES (U.N.)	DRWG. COVERS <b>STRUT ASSEMBLY</b>				
	DETAILER <b>JMD</b>	JOB #	DRWG. # <b>F2</b>		
	CHECKER <b>AM</b>	DATE <b>6-7-09</b>			
	PROJECT MANAGER				

PLOT DATE/TIME: 29 Sep 2013 21:52:16

CHAMFER EDGE OF PLATE AS SHOWN



SECTION A



ONE SIDE SEAL PL-EAST 3SP1

AS SHOWN

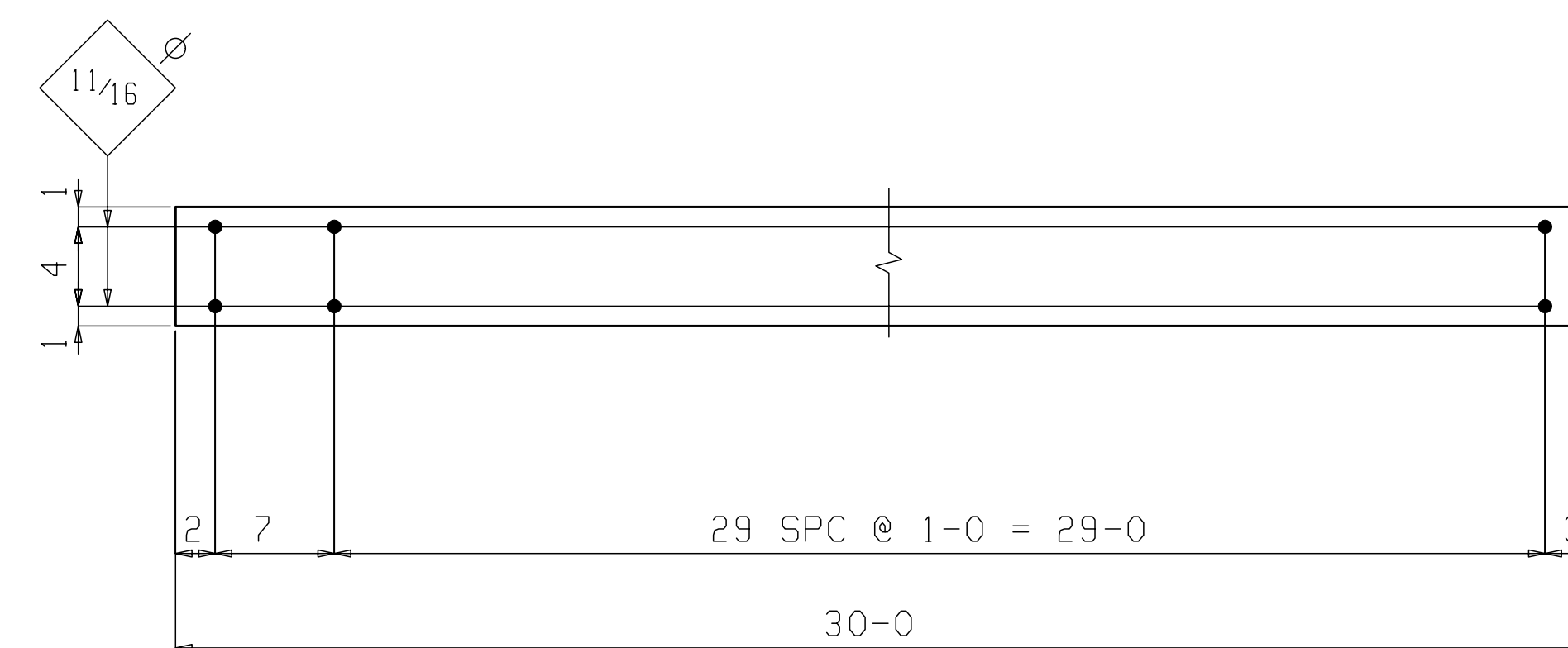
ONE SIDE SEAL PL-WEST 3SP2

OPP HAND

SHOP NOTE:  
BOM WIDTH AND LENGTH DOES NOT  
ACCOUNT FOR "NESTED" SIZE. NEST  
PLATES PER MACHINE CAPACITY PRIOR  
TO ORDERING.

BILL OF MATERIAL

Seq Num	Quan. Total	Main Mark	Quan. Unit	Shape	Length	Minor Mark	Remarks	Steel Grade	Weight Total
1	ONE	3SP1	1	SIDE SEAL PL-EAST					87
	1		1	PL 1/2x8	6 5	3SP1		A36	87
1	ONE	3SP2	1	SIDE SEAL PL-WEST					87
	1		1	PL 1/2x8	6 5	3SP2		A36	87
1	ONE	3SP3	1	BOTTOM SEAL PLATE					227
	1		1	PL 3/8x6	30 0	3SP3		A36	227

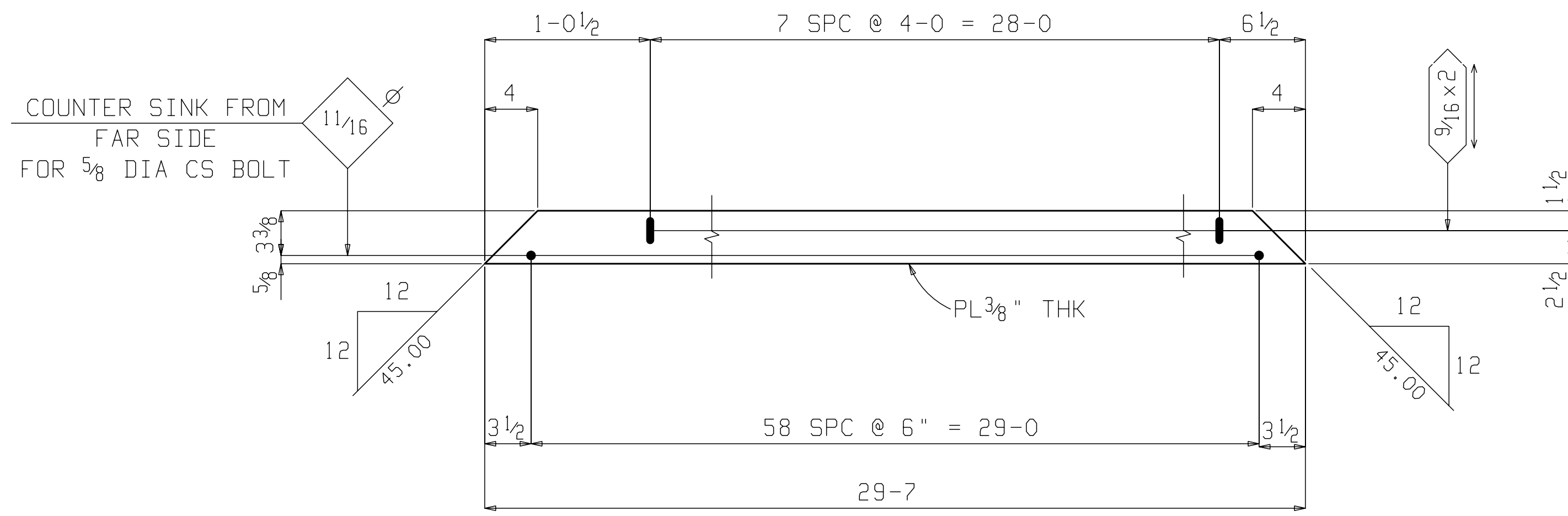


ONE BOTTOM SEAL PLATE 3SP3

Total weight : 401

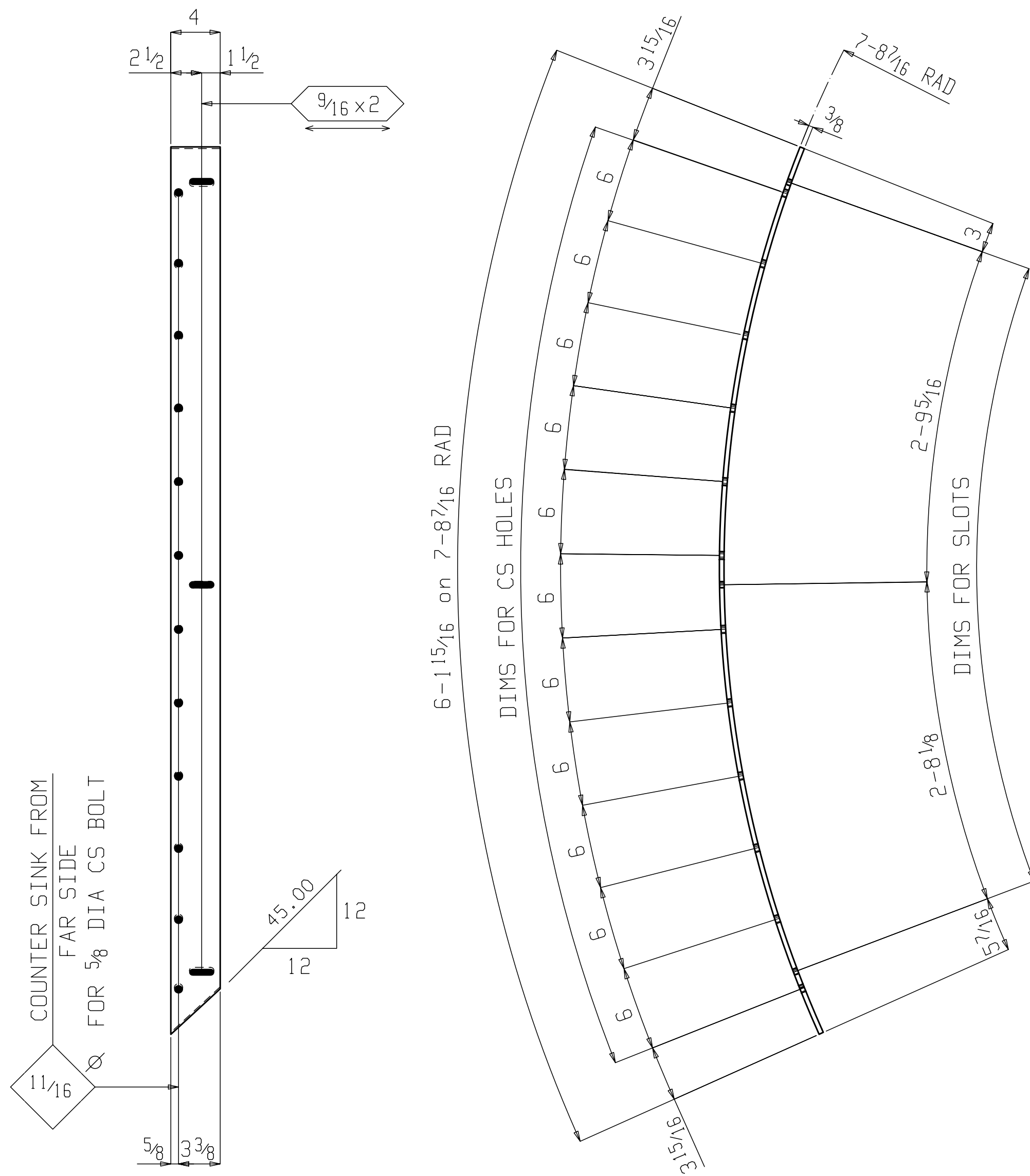
REFERENCE DRWG./LOCATION	E1-E2			FIELD				
MATERIAL (UNLESS NOTED)	A36			SHOP	✓	6-14-09		
				APPR.	✓	6-8-09		
SURFACE PREPARATION	REV.	DATE	DESCRIPTION	PRINTS	NO.	DATE	NO.	DATE
SP3								
SHOP PAINT	JOB <u>TAINTER GATE</u>							
TNEMEC SERIES 66	LOCATION _____							
	CUSTOMER _____							
SHOP CONNECTIONS/ELECTRODES E70XX L.H. ALL SHOP BOLTS TO BE HAND TIGHT	DRWG. COVERS <u>SEAL PLATES</u>							
FIELD CONNECTIONS	HOLES (U.N.)		DETAILER <u>JMD</u>		JOB #		DRWG. #	
			CHECKER <u>AM</u>		DATE <u>6-7-09</u>		<u>F3</u>	
	PROJECT MANAGER _____							

PLOT DATE/TIME: 29 Sep 2013 21:32:16

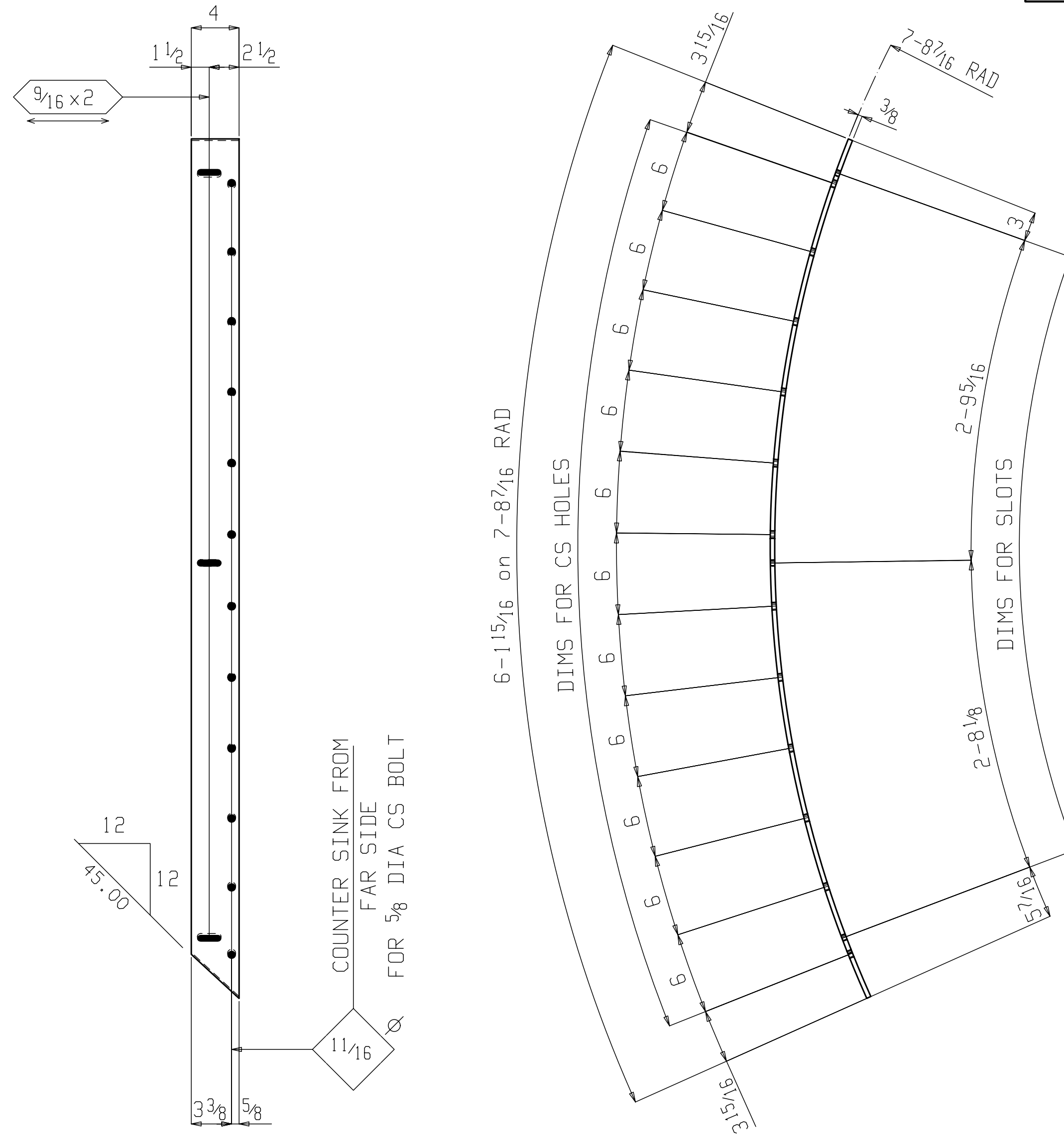


**ONE BOTTOM SEAL SUPPORT PLATE 4SSP1**

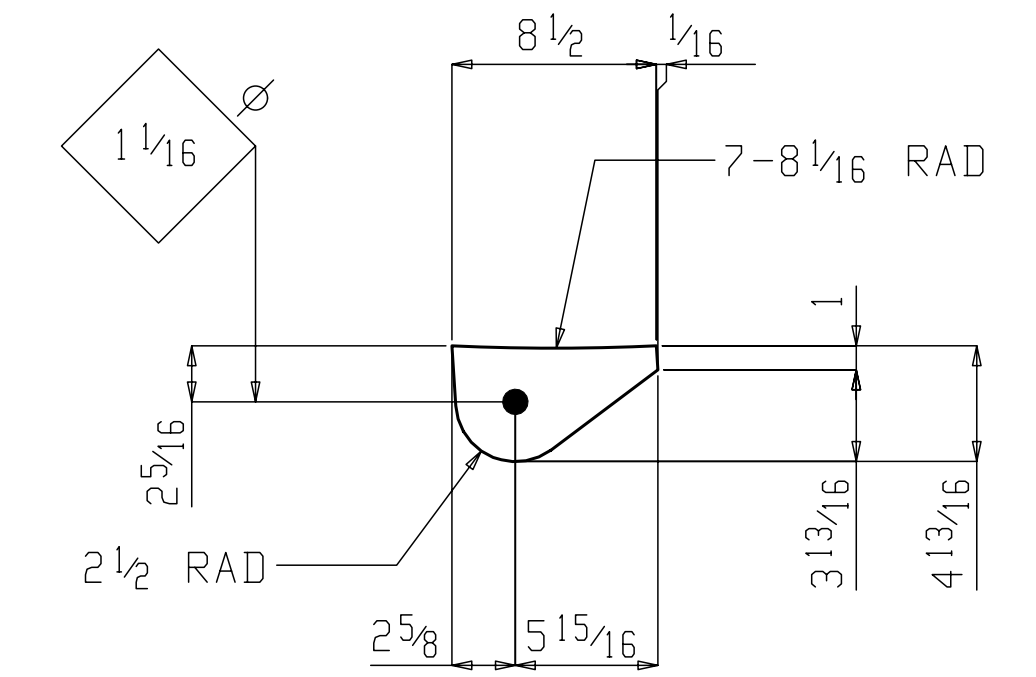
BILL OF MATERIAL									
Seq Num	Quan. Total	Main Mark	Quan. Unit	Shape	Length	Minor Mark	Remarks	Steel Grade	Weight Total
1	ONE	4SSP1	1	BOTTOM SEAL SUPPORT PLATE					151
	1		1	PL 3/8 x 4	29	7	4SSP1 STAINLESS	S304	151
1	ONE	4SSP2	1	SIDE SEAL SUPPORT PLATE-EAST					31
	1		1	PL 3/8 x 4	6	1 15/16	4SSP2 STAINLESS, ROLL	S304	31
1	ONE	4SSP3	1	SIDE SEAL SUPPORT PLATE-WEST					31
	1		1	PL 3/8 x 4	6	1 15/16	4SSP3 STAINLESS, ROLL	S304	31
1	2	4LGP1		LIFTING GUSSET					12
	2		1	PL 1/2 x 4 13/16	0	8 3/16	4LGP1 STAINLESS	S304	12



**ONE SIDE SEAL SUPPORT PLATE-EAST 4SSP2**



**ONE SIDE SEAL SUPPORT PLATE-WEST 4SSP3**



**2 LIFTING GUSSETS 4LGP1**

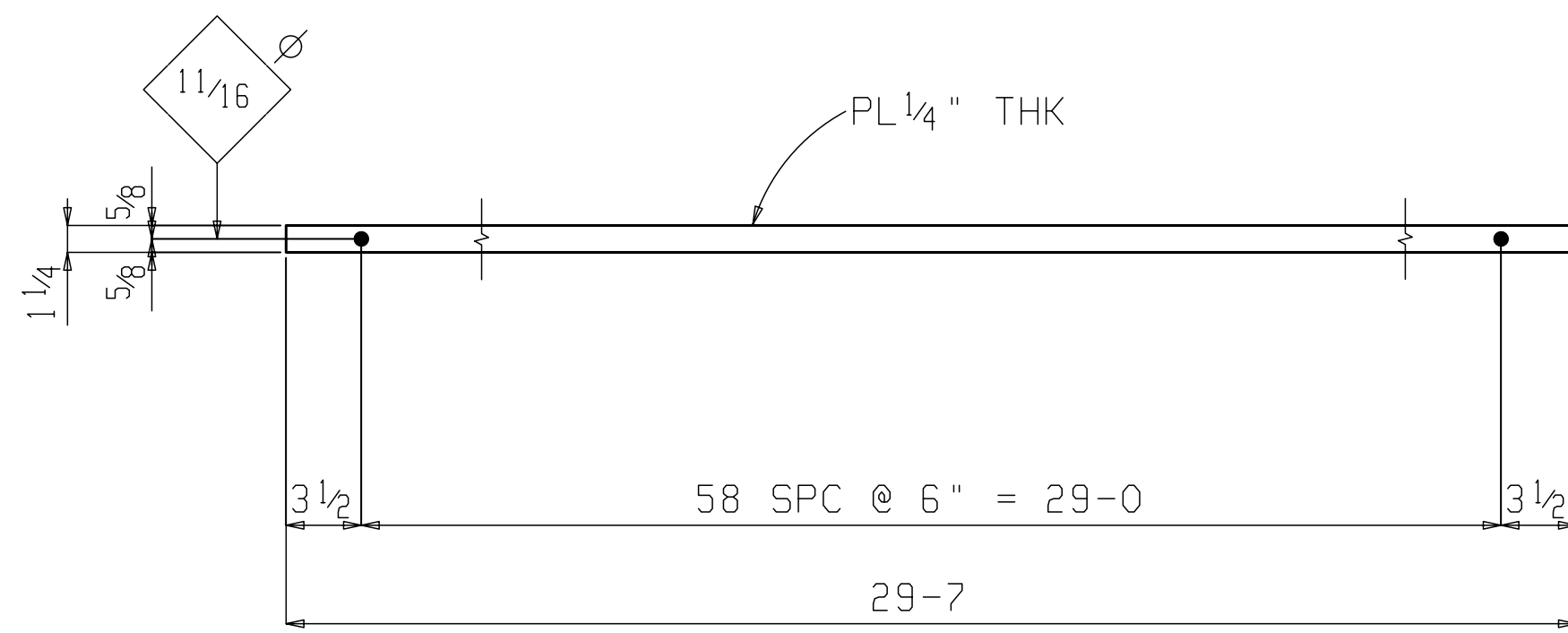
Total weight : 225

REFERENCE DRWG./LOCATION	E1-E2	FIELD			
MATERIAL (UNLESS NOTED)	S304	SHOP	✓	6-14-09	
		APPR.	✓	6-8-09	
SURFACE PREPARATION	NONE	REV.	DATE	DESCRIPTION	PRINTS NO. DATE NO. DATE
SHOP PAINT	NONE	JOB TAINTER GATE			
SHOP CONNECTIONS/ELECTRODES	E70XX L.H.	LOCATION			
ALL SHOP BOLTS TO BE HAND TIGHT		CUSTOMER			
FIELD CONNECTIONS	HOLES (U.N.)	DRWG. COVERS SEAL SUPPORT PLATES			
		DETAILER	JMD	JOB #	DRWG. #
		CHECKER	AM	DATE	6-7-09
		PROJECT MANAGER			F4

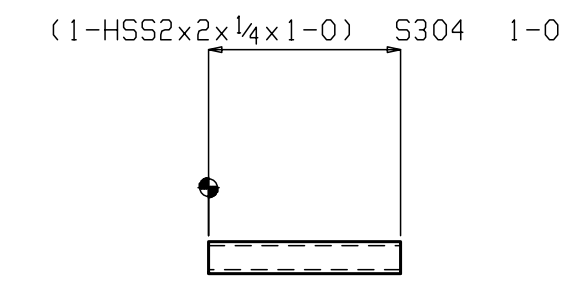
PLOT DATE/TIME: 29 Sep 2013 21:32:16

BILL OF MATERIAL

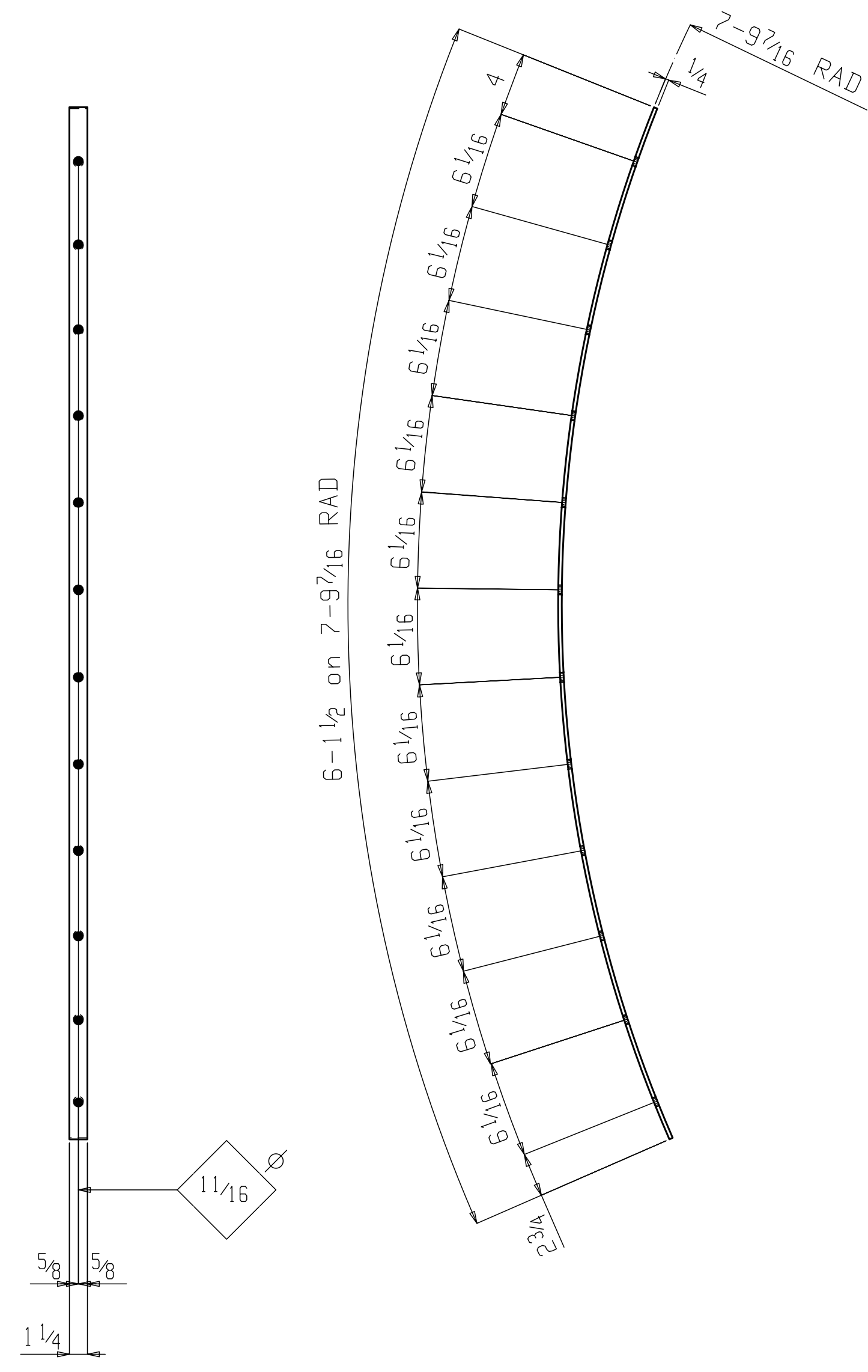
Seq Num	Quan. Total	Main Mark	Quan. Unit	Shape	Length	Minor Mark	Remarks	Steel Grade	Weight Total
1	2	5SKP1		BOTTOM SEAL KEEPER PLATE					63
	2		1	PL 1/4 x 1 1/4	29	7	5SKP1 STAINLESS	S304	63
1	2	5SKP2		SIDE SEAL KEEPER PLATE					12
	2		1	PL 1/4 x 1 1/4	6	9 1/16	5SKP2 STAINLESS, ROLL	S304	12
1	2	5SKP3		SIDE SEAL KEEPER PLATE					12
	2		1	PL 1/4 x 1 1/4	6	8 13/16	5SKP3 STAINLESS, ROLL	S304	12
1	6	5M1		SQ TUBE					32
	6		1	HSS2x2x1/4	1	0	5M1 STAINLESS	S304	32



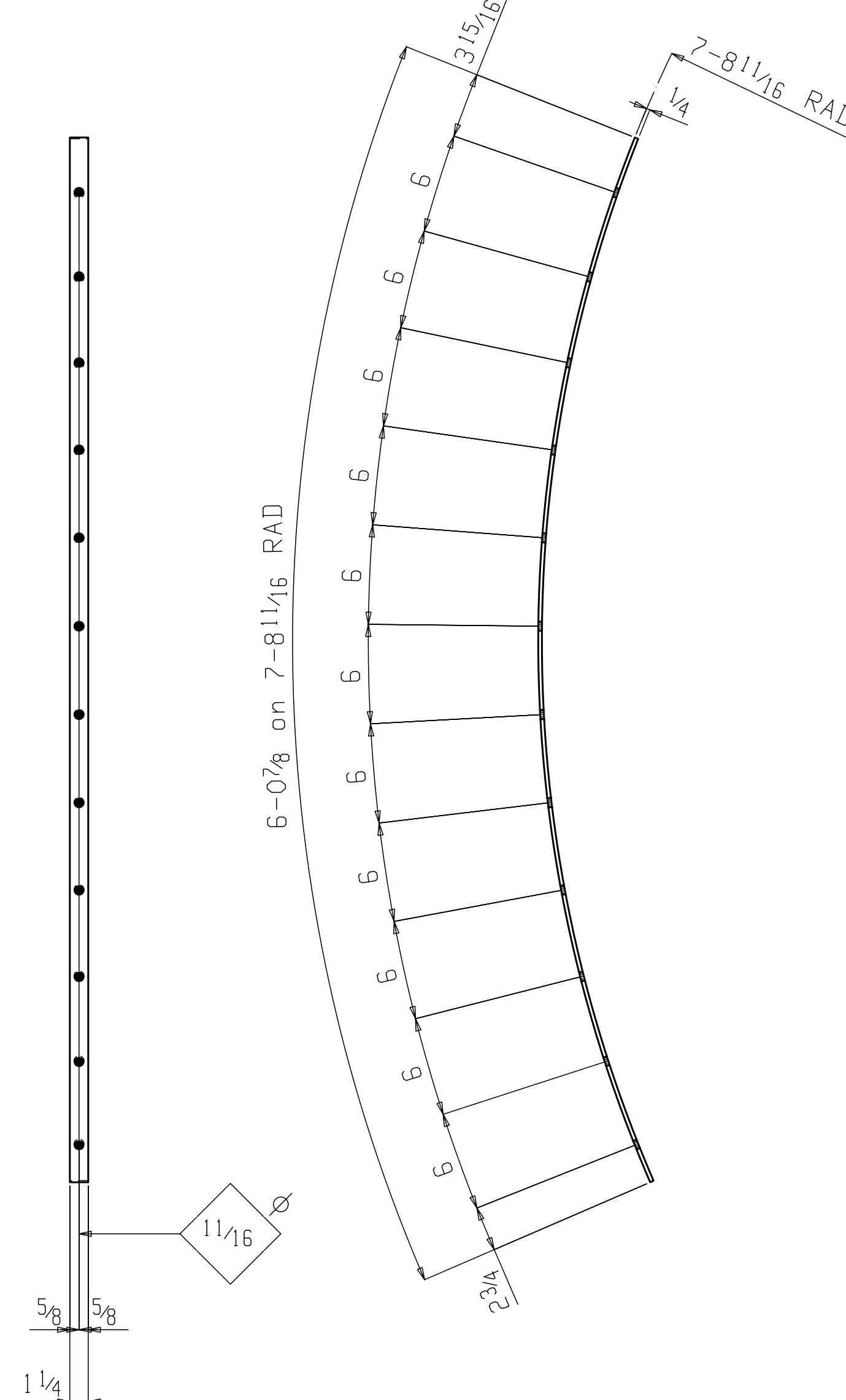
2 BOTTOM SEAL KEEPER PLATES 5SKP1



6 SQ TUBES 5M1



2 SIDE SEAL KEEPER PLATES 5SKP2  
OUTSIDE KEEPER PLATE



2 SIDE SEAL KEEPER PLATES 5SKP3  
INSIDE KEEPER PLATE

SHOP NOTE:  
TEST FIT PLY OF SEAL SUPPORT PLATE WITH INNER AND OUTER PLY(S) OF KEEPER PLATES. REAM HOLES IN KEEPER PLATES TO ENSURE BOLT-THRU.  
  
NOT TO EXCEED 1/8" ENLARGEMENT IN EITHER DIRECTION.

Total weight : 119

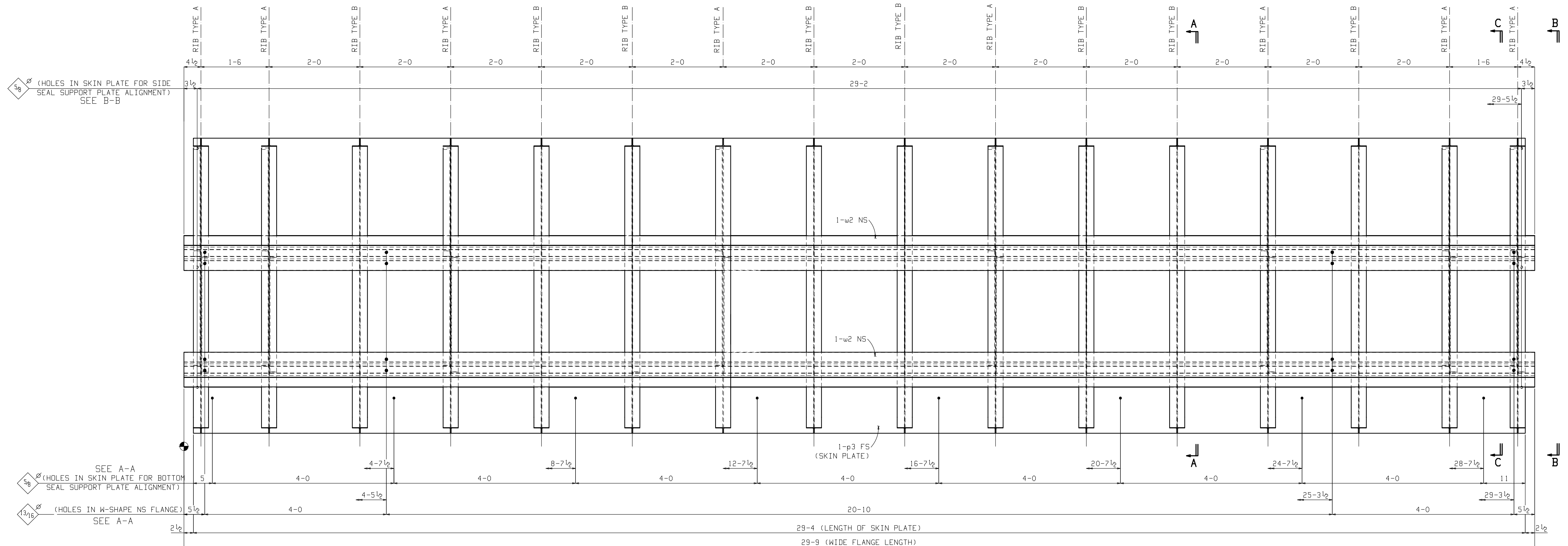
REFERENCE DRWG./LOCATION	E1-E2	FIELD			
MATERIAL (UNLESS NOTED)	S304	SHOP	✓	6-14-09	
		APPR.	✓	6-8-09	
SURFACE PREPARATION	NONE	REV.	DATE	DESCRIPTION	PRINTS NO. DATE NO. DATE
SHOP PAINT	NONE	JOB TAINTER GATE			
SHOP CONNECTIONS/ELECTRODES	E70XX L.H.	LOCATION			
ALL SHOP BOLTS TO BE HAND TIGHT		CUSTOMER			
FIELD CONNECTIONS	HOLES (U.N.)	DRWG. COVERS SEAL KEEPER PLATES & MISC			
		DETAILER	JMD	JOB #	DRWG. #
		CHECKER	AM	DATE	6-7-09
		PROJECT MANAGER			F5

PLOT DATE/TIME: 29 Sep 2013 21:32:16



BILL OF MATERIAL

Seq Num	Quan. Total	Main Mark	Quan. Unit	Shape	Length	Minor Mark	Remarks	Steel Grade	Weight Total	
1	ONE	6TG1		TAINER GATE					5157	
	2		2	W14x30	29	9	w2	A992	1784	
	16		16	WT4x6.5	6	8 <sup>3</sup> / <sub>16</sub>	wt1	A572-50	672	
	8		8	L2x2x <sup>1</sup> / <sub>4</sub>	2	8 <sup>1</sup> / <sub>2</sub>	a3	B2E	64	
	8		8	L2x2x <sup>1</sup> / <sub>4</sub>	2	8 <sup>1</sup> / <sub>2</sub>	a4	B2E	64	
	8		8	L2x2x <sup>1</sup> / <sub>4</sub>	2	4 <sup>3</sup> / <sub>4</sub>	a5	B2E	56	
	1		1	PL <sup>5</sup> / <sub>16</sub> x80 <sup>13</sup> / <sub>16</sub>	29	4	p3	ROLLED	A36	2517



ONE TAINER GATE 6TG1

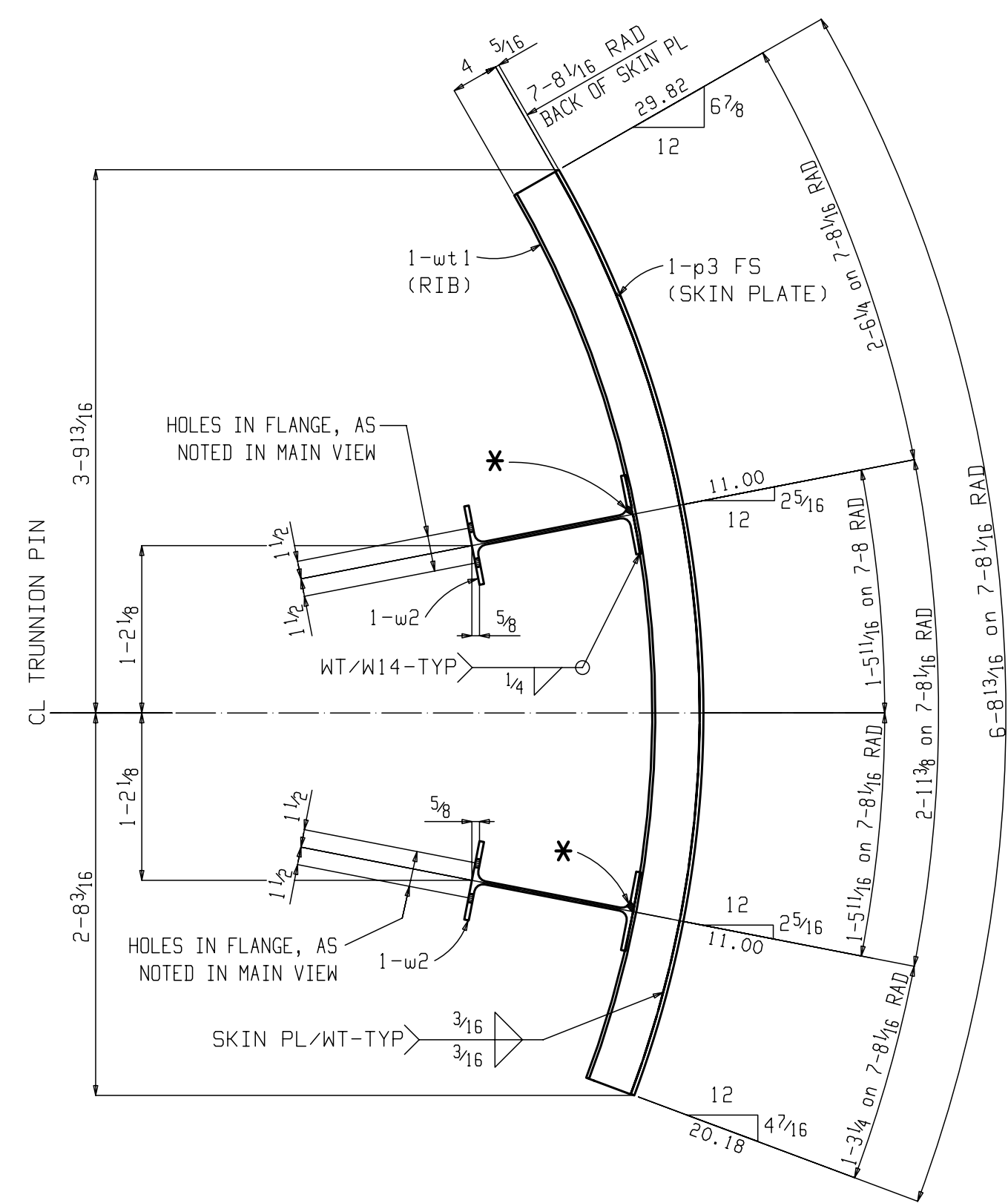
Total weight : 5157

SEE GATHER DRAWINGS FOR SUB-MAT'L LAYOUT DIMENSIONS.

WORK THIS DRAWING WITH DRAWING F6B

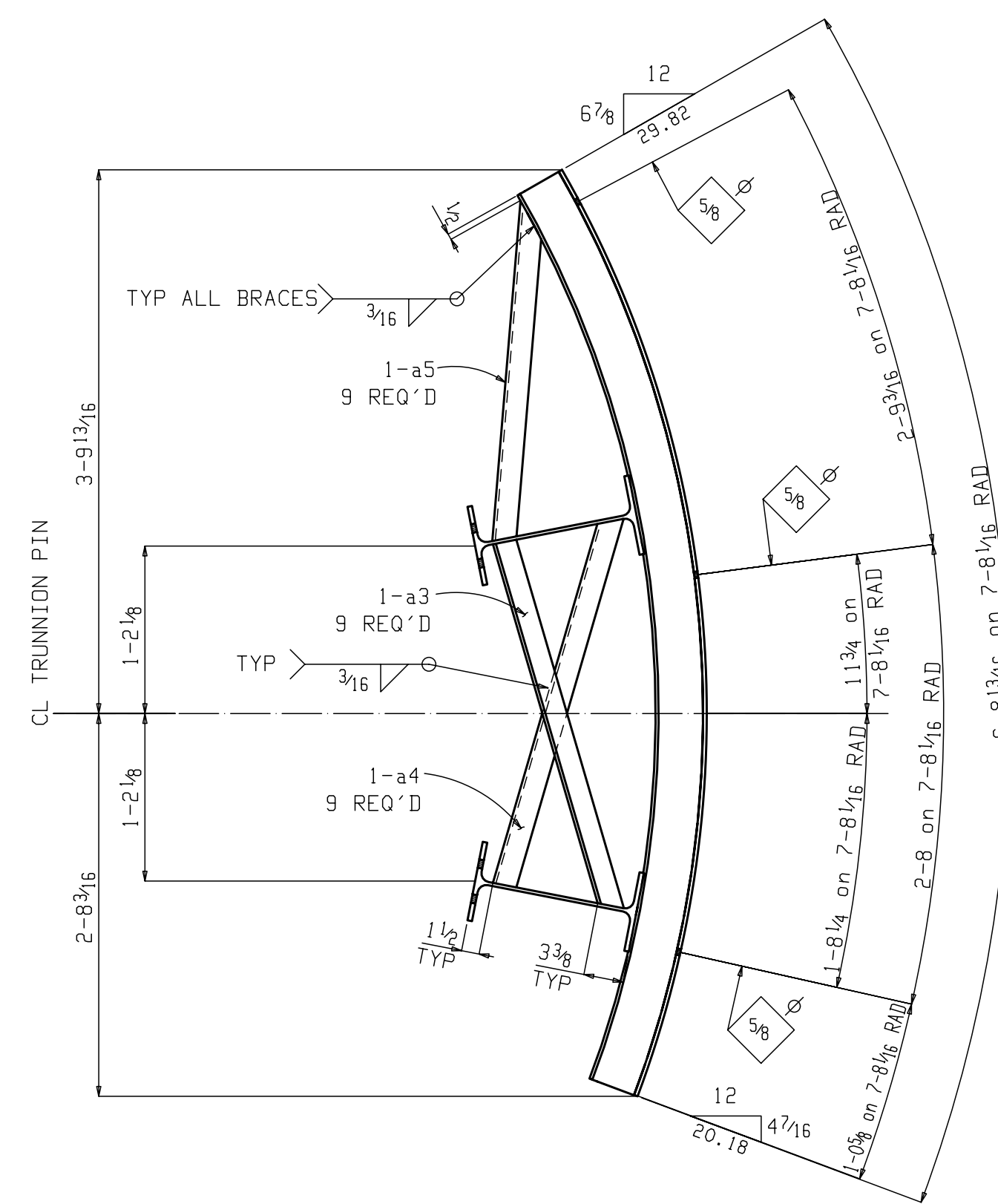
REFERENCE DRWG./LOCATION	E1-E2	FIELD			
MATERIAL (UNLESS NOTED)	A36	SHOP	✓	6-14-09	
		APPR.	✓	6-8-09	
SURFACE PREPARATION	SP3	REV.	DATE	DESCRIPTION	PRINTS NO. DATE NO. DATE
SHOP PAINT	TNEMEC SERIES 66	JOB	TAINER GATE		
		LOCATION			
		CUSTOMER			
SHOP CONNECTIONS/ELECTRODES	E70XX L.H.	DRWG. COVERS	TAINER GATE		
ALL SHOP BOLTS TO BE HAND TIGHT		DETAILER	JMD	JOB #	DRWG. #
FIELD CONNECTIONS		CHECKER	AM	DATE	6-7-09
HOLES (U.N.)		PROJECT MANAGER			
					F6A

PLOT DATE/TIME: 29 Sep 2013 21:32:16



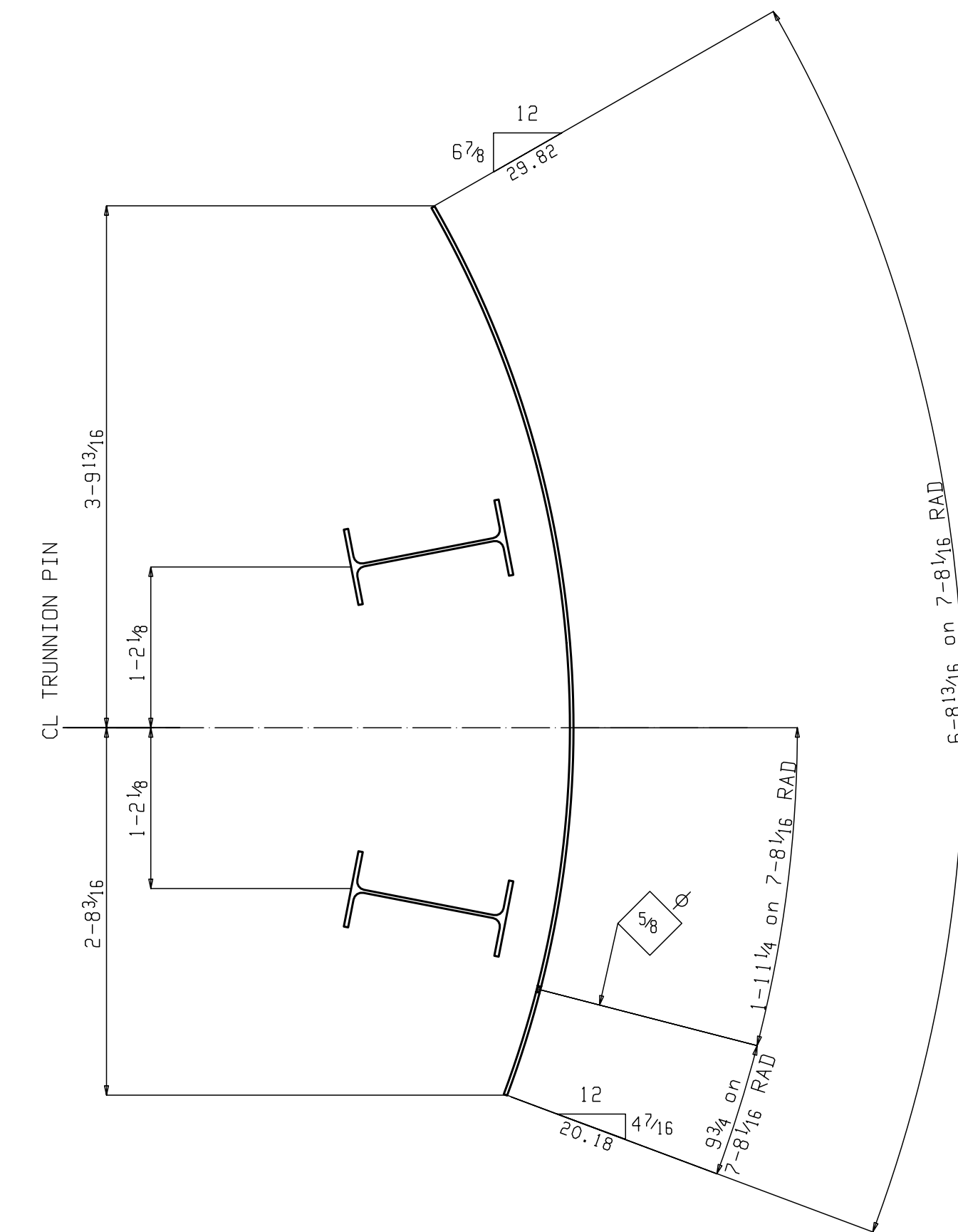
**Section A-A**  
**MAIN SECTION - RIB TYPE B**

\* = 1/2 DIA HOLE THRU W SHAPE.  
 POSITION HOLE AS CLOSE TO "K" AS  
 POSSIBLE. LOCATE (1) HOLE BETWEEN  
 EACH RIB SPACING.



**Section B-B**  
**RIB TYPE A &**  
**INFO FOR SIDE SEAL SUPPORT**  
**PLATE ALIGNMENT HOLES**

SEE SECTION A-A FOR  
 INFO NOT SHOWN



**Section C-C**  
**INFO FOR BOTTOM SEAL SUPPORT**  
**PLATE ALIGNMENT HOLES**

SEE SECTION A-A FOR  
 INFO NOT SHOWN

SEE GATHER DRAWINGS FOR  
 SUB-MAT'L LAYOUT DIMENSIONS.

Total weight : 0

WORK THIS DRAWING WITH  
 DRAWING F6A

REFERENCE DRWG./LOCATION	FIELD	NO.	DATE	NO.	DATE
E1-E2	SHQP	✓	6-14-09		
MATERIAL (UNLESS NOTED)	APPR.	✓	6-8-09		
A36	REV.	DATE	DESCRIPTION	PRINTS	NO.
SURFACE PREPARATION					
SP3					
SHQP PAINT					
TNAMEC SERIES 66					
SHQP CONNECTIONS/ELECTRODES E70XX L.H.					
ALL SHQP BOLTS TO BE HAND TIGHT					
FIELD CONNECTIONS HOLES (U.N.)					
JOB #					
DRAWG. #					
F6B					

PLOT DATE/TIME: 29 Sep 2013 21:32:16