

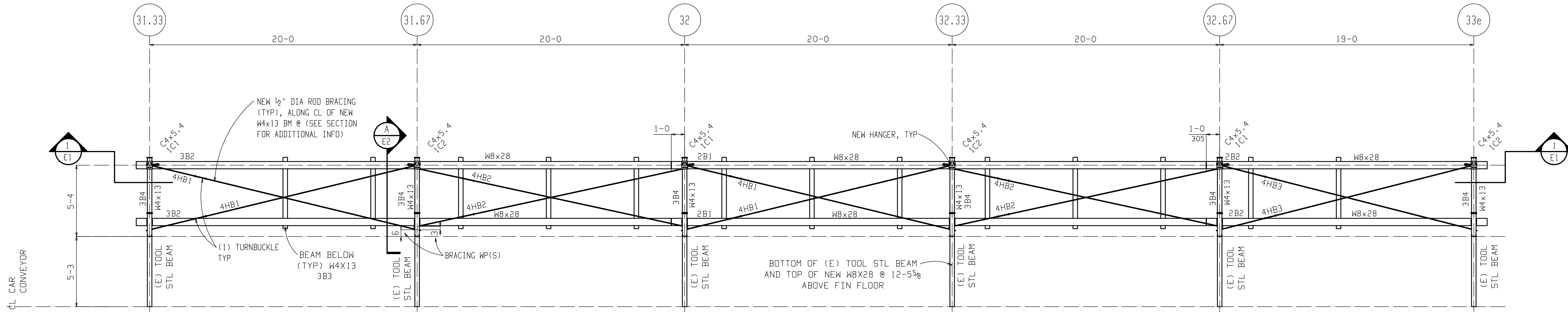


ISOMETRIC

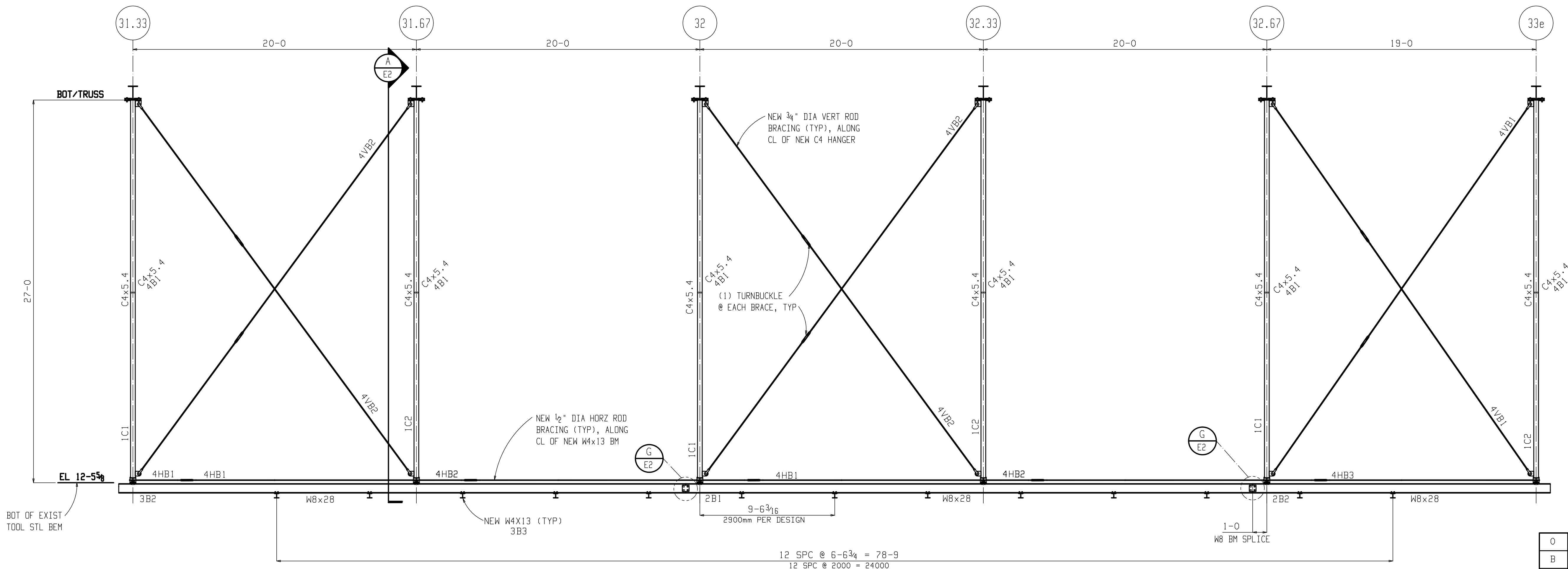
0	10-27-13	ISSUED FOR SHOP AND FIELD
B	10-22-13	ISSUED FOR APPROVAL
A	10-19-13	ISSUED FOR APPROVAL
REV.	DATE	DESCRIPTION
 		
<small>432 McNEELY RD. P.O. BOX 51127 Telephone (864)295-1760 Piedmont, S.C. 29673 Fax (864)299-8809</small>		
JOB HALL 52 - NEW FLUID FILL AT AE-32		
LOCATION SPARTANBURG, SC		
CUSTOMER SMITH ENGINEERING & CONSTRUCTION, LLC		
DRWG. COVERS ERECTION PLANS		
DETAILER	PALMETTO STRUCTURAL DETAILING, LLC	JOB #
CHECKER	JAM	DATE 10-27
PROJECT MANAGER	MIKE WILSON	13-1481 EISO

PLOT DATE/TIME: 10/27/13 12:48:58 PM



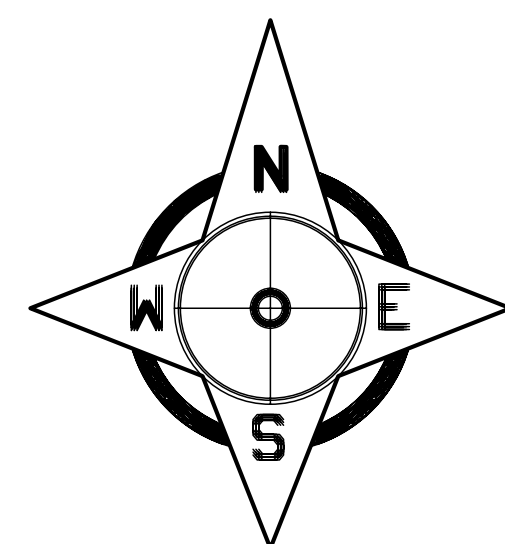
LOW FRAMING PLAN

T.O.S. - SEE SECTIONS



ELEVATION ONE

T.O.S. - SEE SECTIONS



FOR ERECTION ONLY

- FIELD NOTES:
1. ALL BOLTED CONNECTIONS SHALL BE FULLY PRETENSIONED BY THE ERECTOR.
 2. WHERE FIELD WELDING IS PERMITTED, THE GALVANIZING SHALL BE REMOVED WITHIN 4 INCHES OF THE WELD AND COATED AFTER WELDING.

NOTICE TO ERECTOR

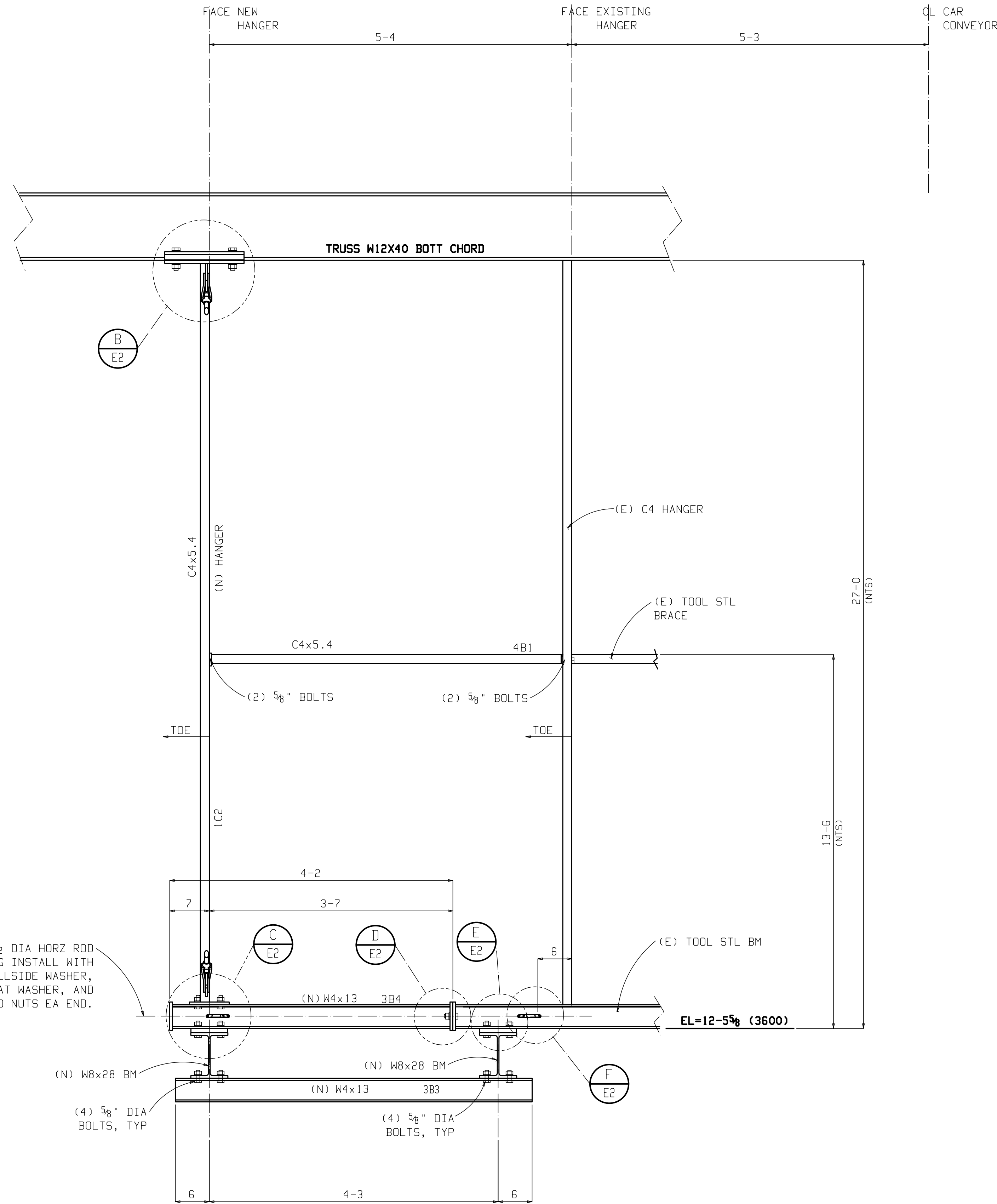
IF ANY CORRECTIVE WORK OR REPLACEMENT MATERIAL IS BELIEVED NECESSARY, THE STEEL FABRICATOR SHALL BE IMMEDIATELY ADVISED AND HIS AUTHORIZATION OBTAINED BEFORE ANY SUCH ACTION IS TAKEN!!!!

0	10-27-13	ISSUED FOR SHOP AND FIELD
B	10-22-13	ISSUED FOR APPROVAL
A	10-19-13	ISSUED FOR APPROVAL
REV.	DATE	DESCRIPTION

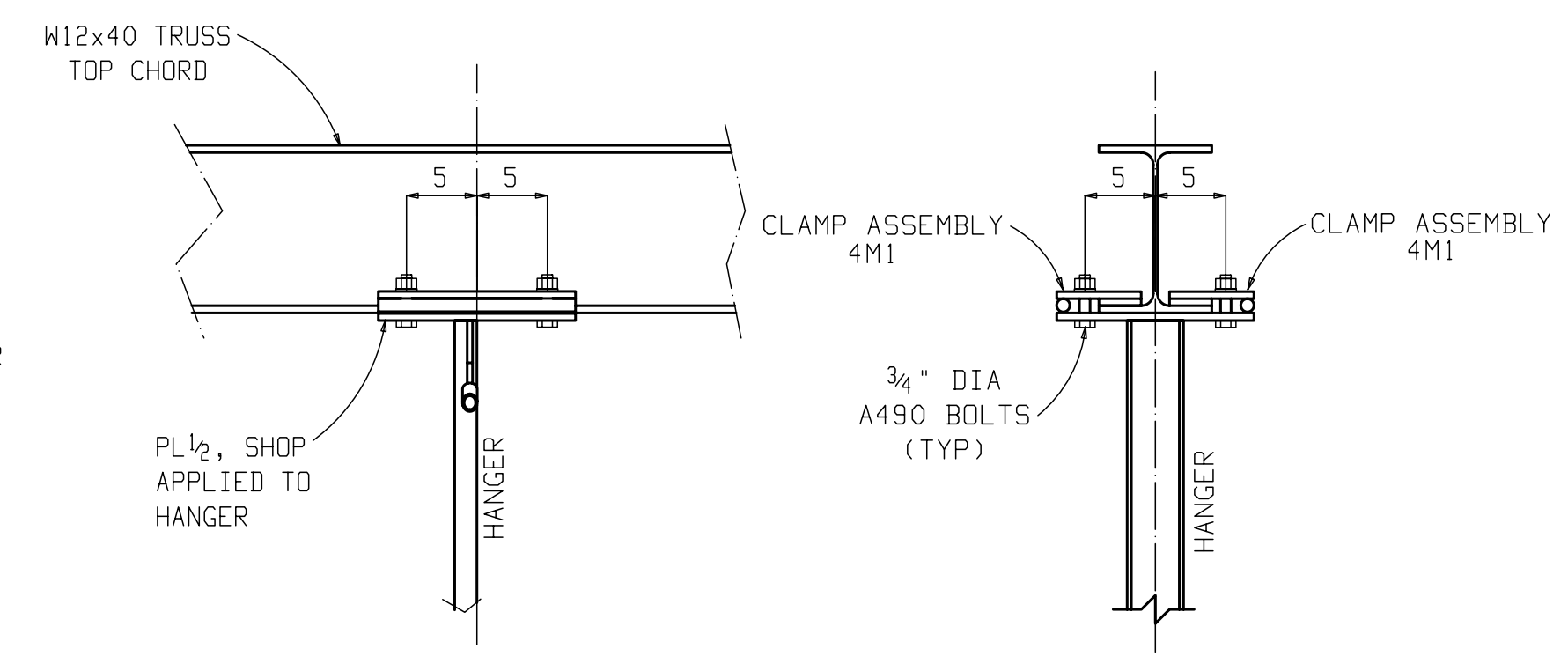



432 McNEELY RD. P.O. BOX 51127 Telephone (864)295-1760
 Piedmont, S.C. 29673 Fax (864)299-8809

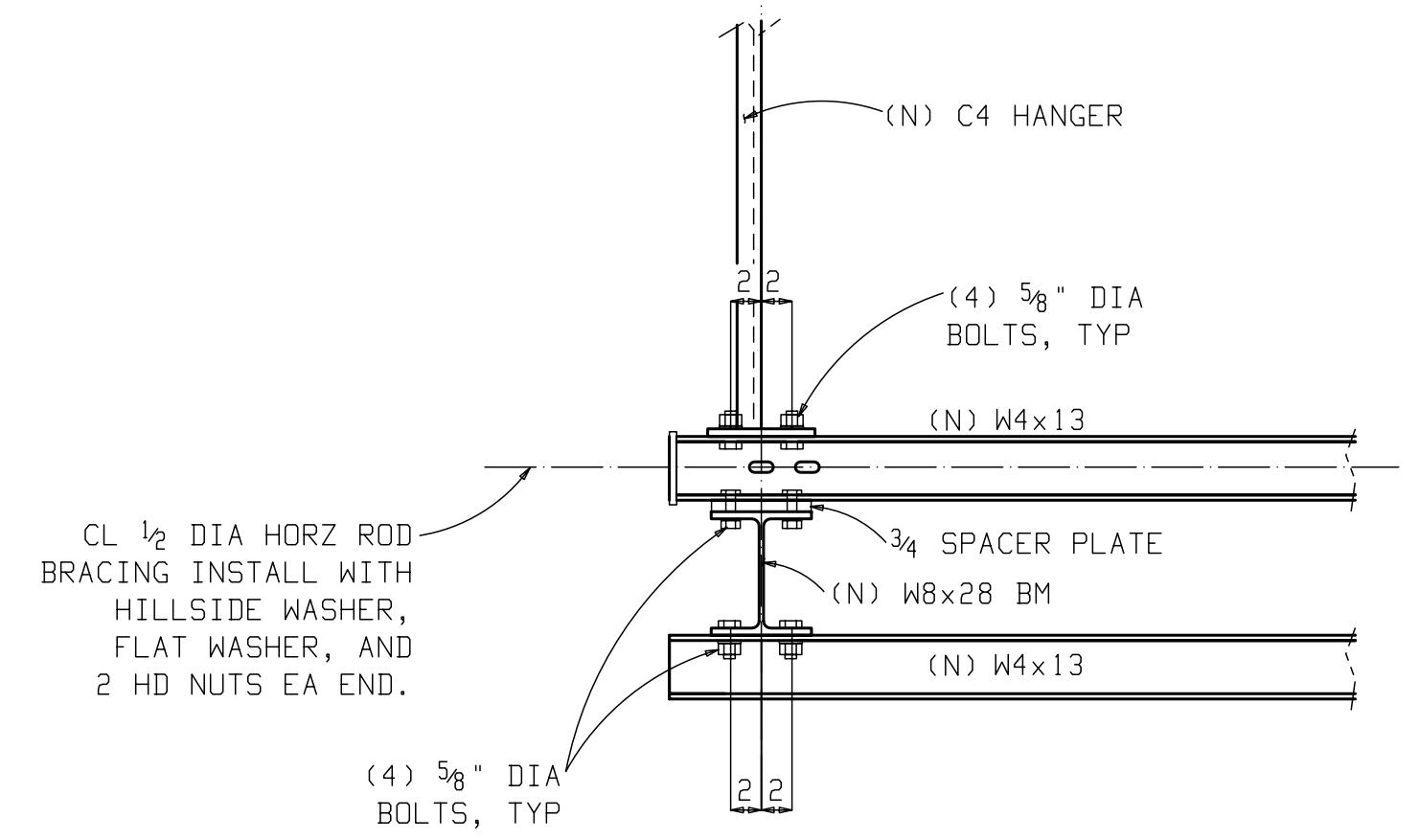
JOB	HALL 52 - NEW FLUID FILL AT AE-32		
LOCATION	SPARTANBURG, SC		
CUSTOMER	SMITH ENGINEERING & CONSTRUCTION, LLC		
DRWG. COVERS	ERECTION PLANS		
DETAILER	PALMETTO STRUCTURAL DETAILING, LLC	JOB #	13-1481
CHECKER	JAM	DATE	10-27
PROJECT MANAGER	MIKE WILSON		
DRWG. #	E1		



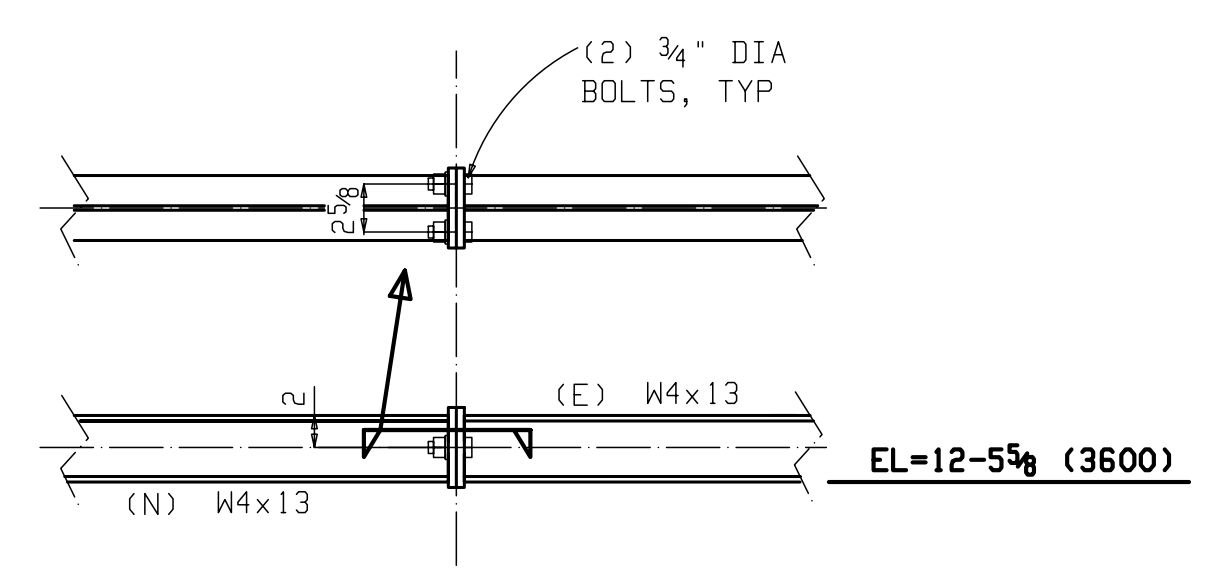
SECTION A



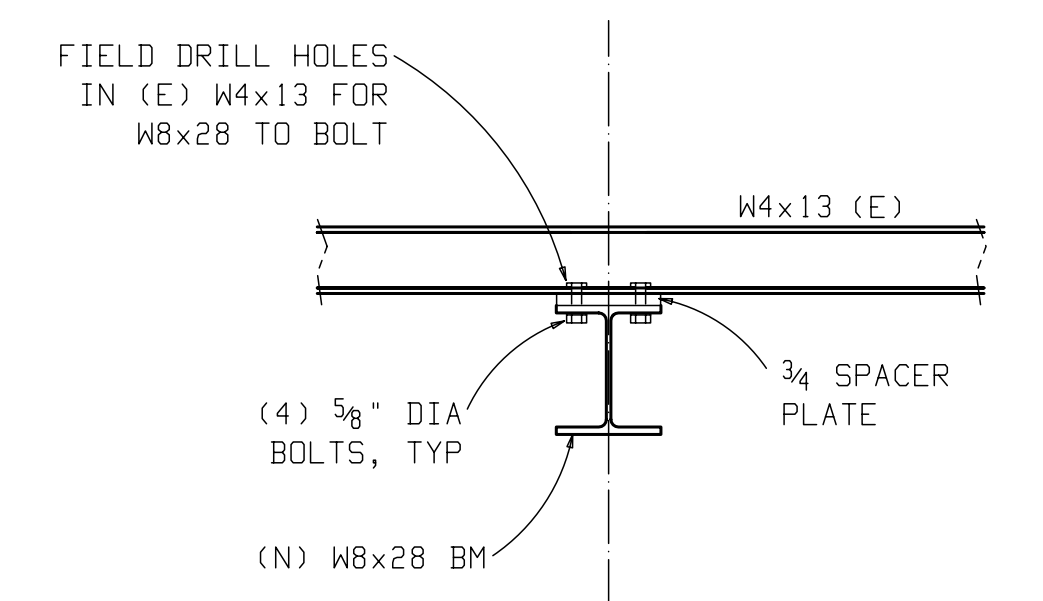
DETAIL B



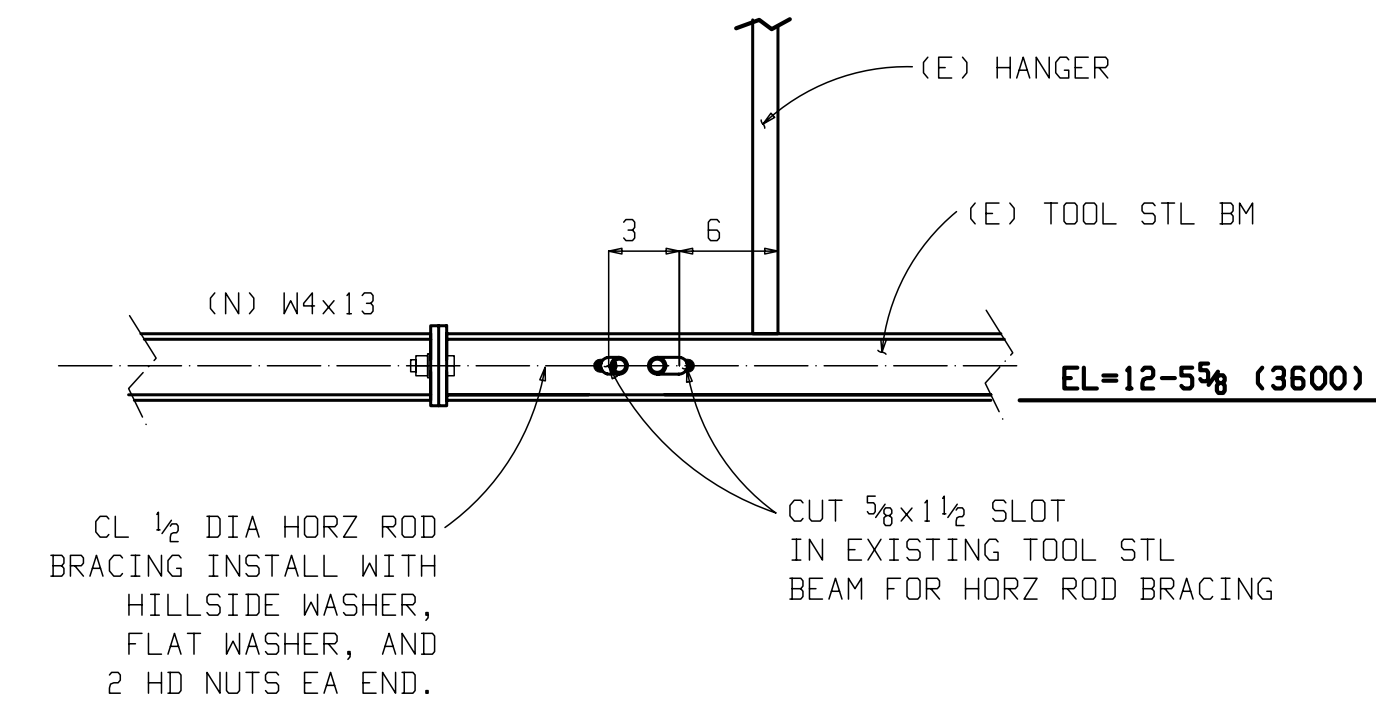
DETAIL C



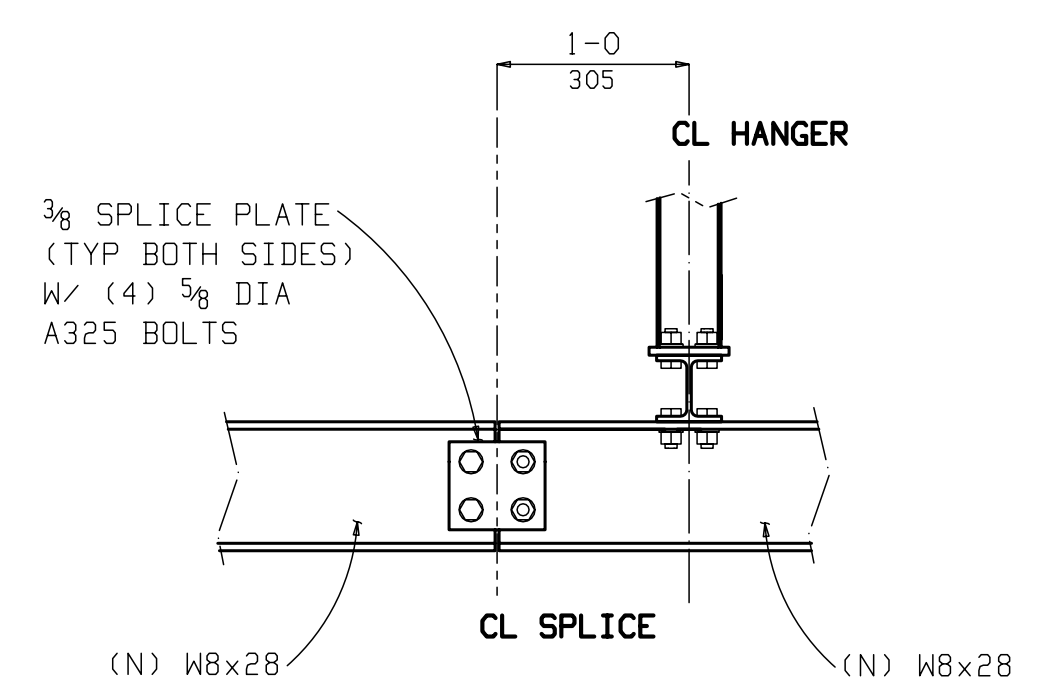
DETAIL D



DETAIL E



DETAIL F



DETAIL G

FIELD NOTES:
 1. ALL BOLTED CONNECTIONS SHALL BE FULLY PRETENSIONED BY THE ERECTOR.
 2. WHERE FIELD WELDING IS PERMITTED, THE GALVANIZING SHALL BE REMOVED WITHIN 4 INCHES OF THE WELD AND COATED AFTER WELDING.

NOTICE TO ERECTOR

IF ANY CORRECTIVE WORK OR REPLACEMENT MATERIAL IS BELIEVED NECESSARY, THE STEEL FABRICATOR SHALL BE IMMEDIATELY ADVISED AND HIS AUTHORIZATION OBTAINED BEFORE ANY SUCH ACTION IS TAKEN !!!!!

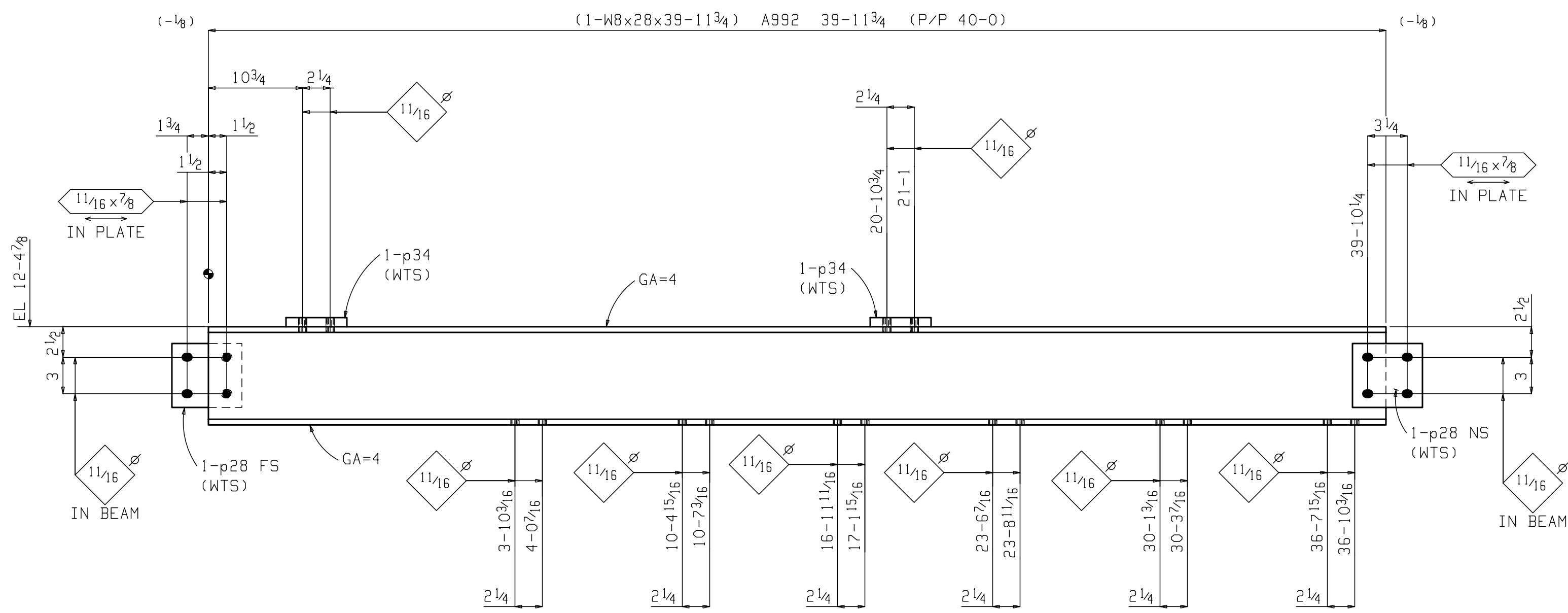
REV.	DATE	DESCRIPTION
0	10-27-13	ISSUED FOR SHOP AND FIELD
B	10-22-13	ISSUED FOR APPROVAL
A	10-19-13	ISSUED FOR APPROVAL

Steel Works
 -- of the Carolinas, Inc. --

432 McNEELY RD. P.O. BOX 51127 Telephone (864)295-1760
 Piedmont, S.C. 29673 Fax (864)299-8809

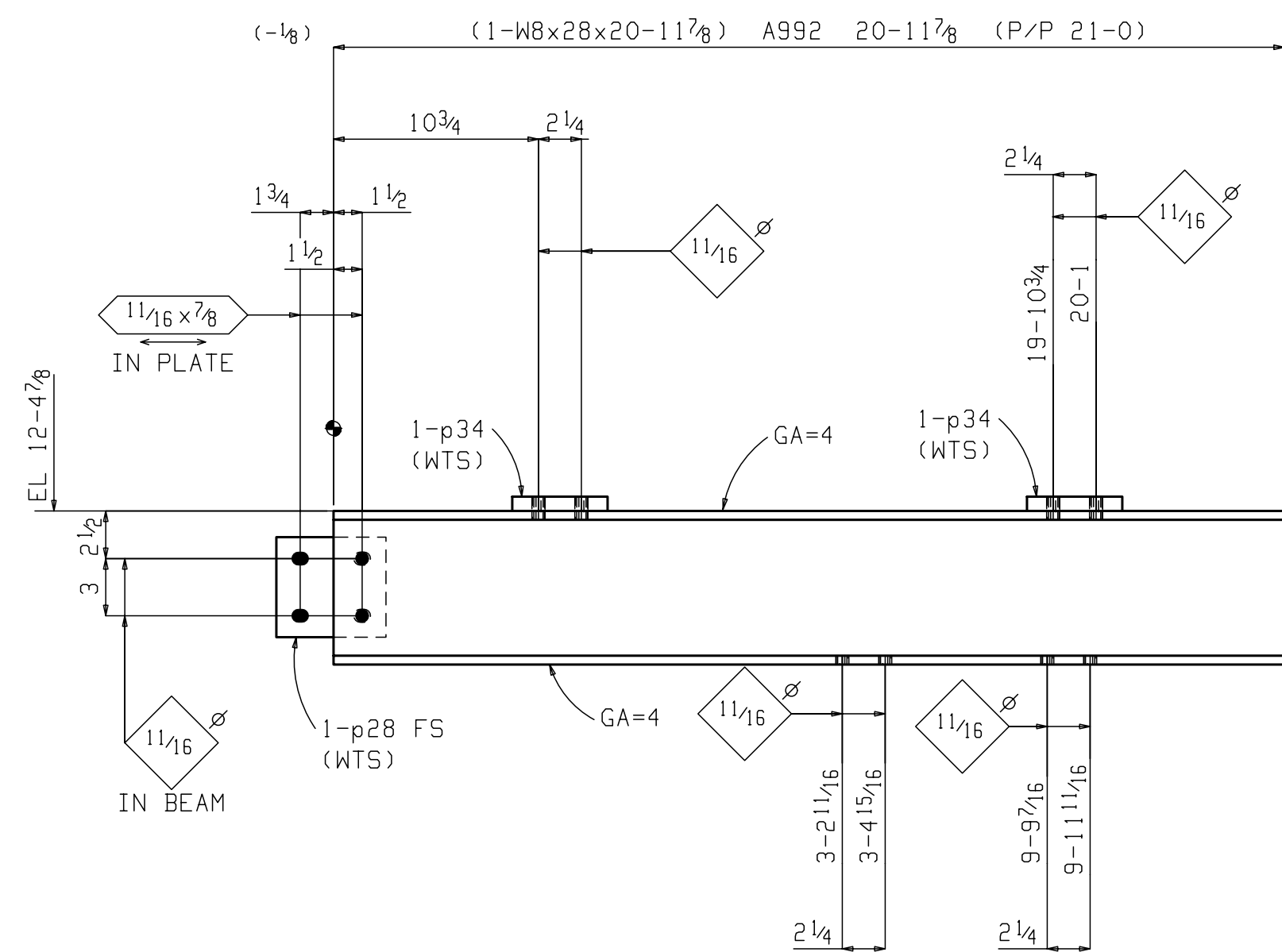
JOB	HALL 52 - NEW FLUID FILL AT AE-32		
LOCATION	SPARTANBURG, SC		
CUSTOMER	SMITH ENGINEERING & CONSTRUCTION, LLC		
DRWG. COVERS	ERECTION SECTIONS		
DETAILER	PALMETTO STRUCTURAL DETAILING, LLC	JOB #	13-1481
CHECKER	JAM	DATE	10-27
PROJECT MANAGER	MIKE WILSON	DRWG. #	E2

PLOT DATE/TIME: 10/27/13 12:48:58P



2 BEAMS 2B1

FIELD BOLTS:
 48-5/8x1 3/4 A325 +1HD WASH
 16-5/8x2 1/2 A325 +1HD WASH
 8-5/8x2 1/4 A325 +2HD WASH



2 BEAMS 2B2

FIELD BOLTS:
 16-5/8x1 3/4 A325 +1HD WASH
 16-5/8x2 1/2 A325 +1HD WASH

BILL OF MATERIAL

Seq Num	Quan. Total	Main Mark	Quan. Unit	Shape	Length	Minor Mark	Remarks	Steel Grade	Weight Total
1	2	2B1		BEAM					2279
	2		1	W8x28	39	11 3/4	2B1	A992	2239
	4		2	PL 3/4x5	0	6 1/2	p34	A36	28
	4		2	PL 3/8x5 1/4	0	5 3/4	p28	A36	13
				FIELD BOLTS					
	16		5/8 Dia	A325	0	2 1/2	+1HD WASH		
	8		5/8 Dia	A325	0	2 1/4	+2HD WASH		
	48		5/8 Dia	A325	0	1 3/4	+1HD WASH		
1	2	2B2		BEAM					1209
	2		1	W8x28	20	11 7/8	2B2	A992	1175
	4		2	PL 3/4x5	0	6 1/2	p34	A36	28
	2		1	PL 3/8x5 1/4	0	5 3/4	p28	A36	6
				FIELD BOLTS					
	16		5/8 Dia	A325	0	2 1/2	+1HD WASH		
	16		5/8 Dia	A325	0	1 3/4	+1HD WASH		

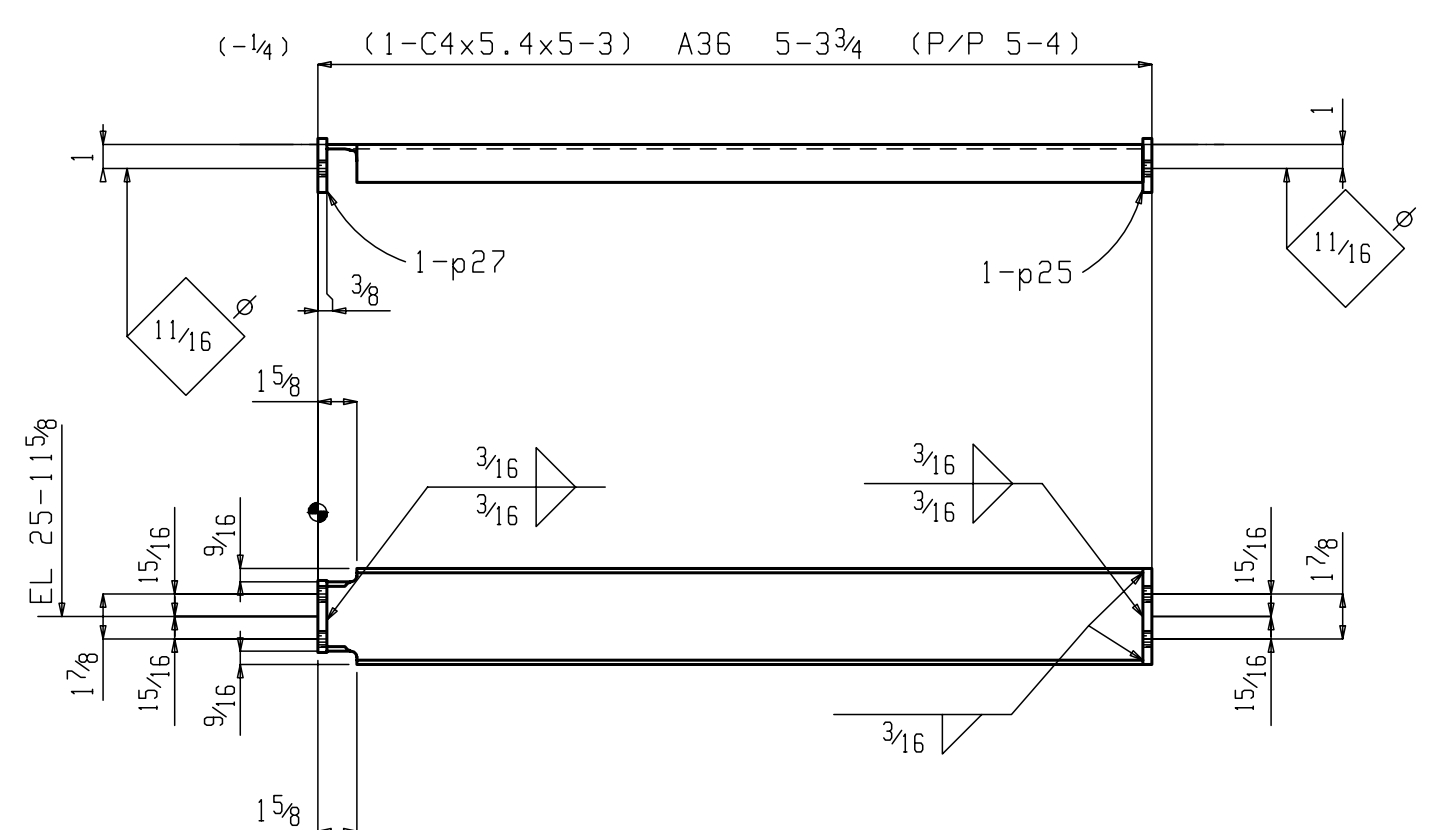
Total weight : 3489

REFERENCE DRWG./LOCATION	O	10-27-13	ISSUED FOR SHOP AND FIELD
E1-E2	B	10-22-13	ISSUED FOR APPROVAL
	A	10-19-13	ISSUED FOR APPROVAL
	REV.	DATE	DESCRIPTION
MATERIAL (UNLESS NOTED)	A36		
SURFACE PREPARATION	SP3		
SHOP PAINT (UNLESS NOTED)	1 S/C BMW WHITE		
SHOP CONNECTIONS/ELECTRODES	E70XX L.H. ALL SHOP BOLTS TO BE HAND TIGHT		
FIELD CONNECTIONS	3/4	A325	HOLES (U.N.) 13/16

432 McNEELY RD. P.O. BOX 51127
 Piedmont, S.C. 29673
 Telephone (864)295-1760
 Fax (864)299-8809

Steel Works
 -- of the Carolinas, Inc. --

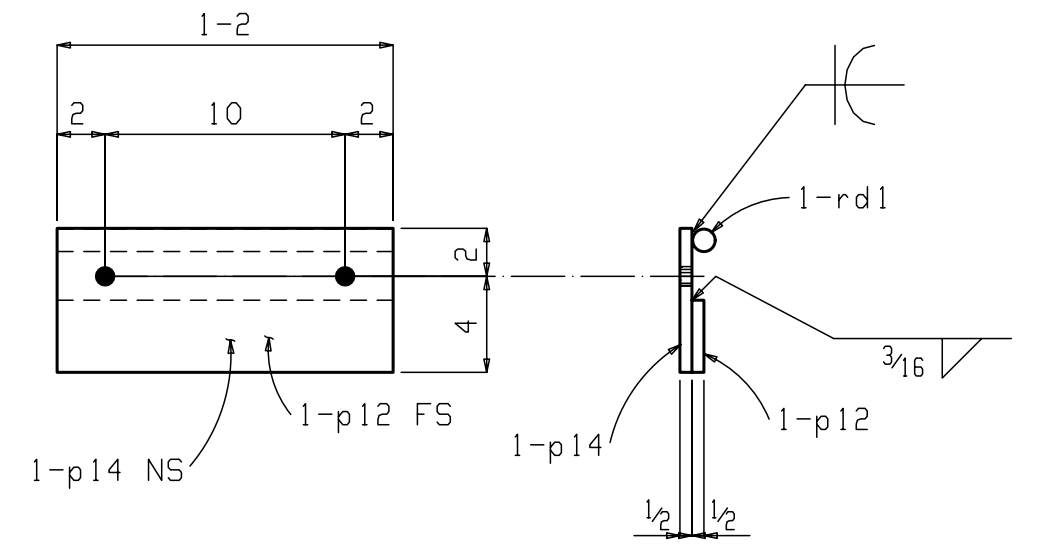
JOB	HALL 52 - NEW FLUID FILL AT AE-32		
LOCATION	SPARTANBURG, SC		
CUSTOMER	SMITH ENGINEERING & CONSTRUCTION, LLC		
DRWG. COVERS	DETAILS		
DETAILER	PALMETTO STRUCTURAL DETAILING, LLC	JOB #	13-1481
CHECKER	JAM	DATE	10-27
PROJECT MANAGER	MIKE WILSON	DRWG. #	F2



6 BEAMS 4B1

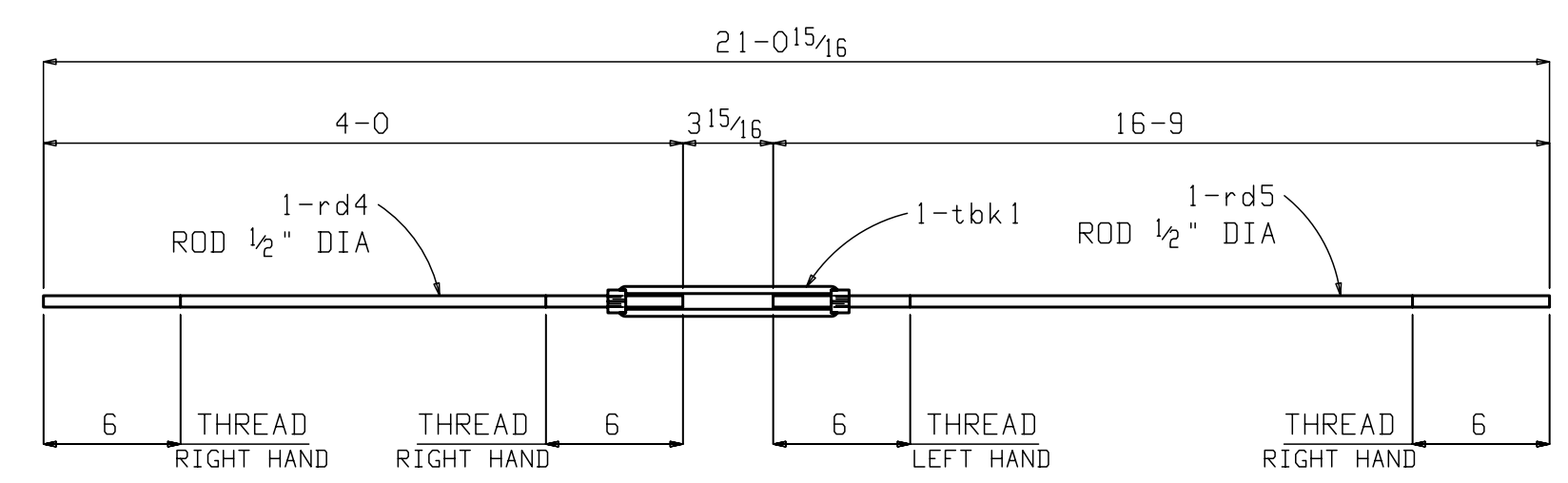
SHOP NOTE:
TOE DIRECTION NEAR SIDE

FIELD BOLTS:
12-5/8x2 A325 +1HD WASH



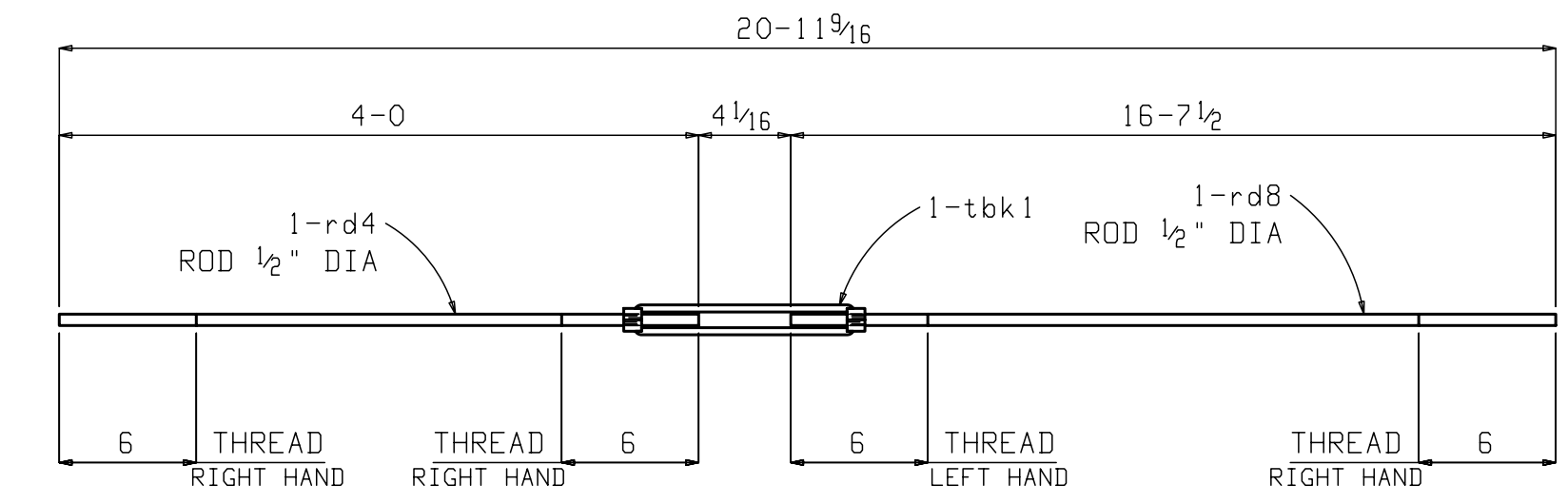
12 CLAMP ASSEMBLIES 4M1

FIELD BOLTS:
24-3/4x3 1/2 A490 +2HD WASH



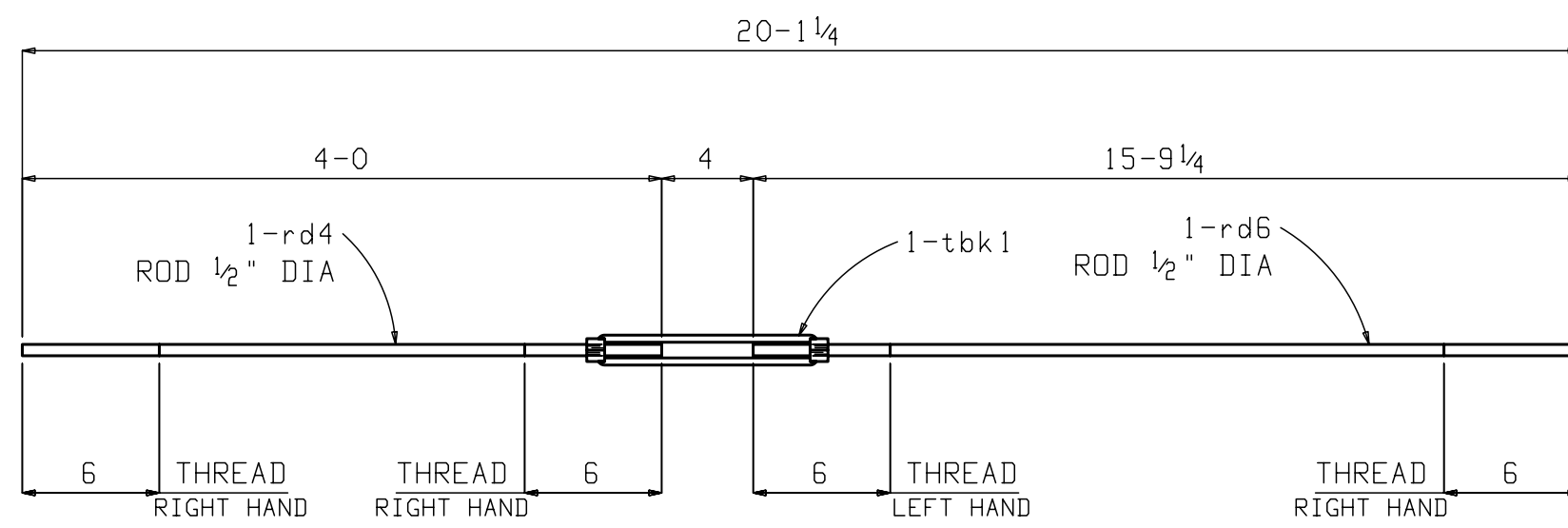
4 ROD BRACES 4HB1

FIELD BOLTS:
(8) - 1/2 HILLSIDE WASHERS
(8) - 1/2 HD WASHERS
(8) - 1/2 HARDENED NUTS



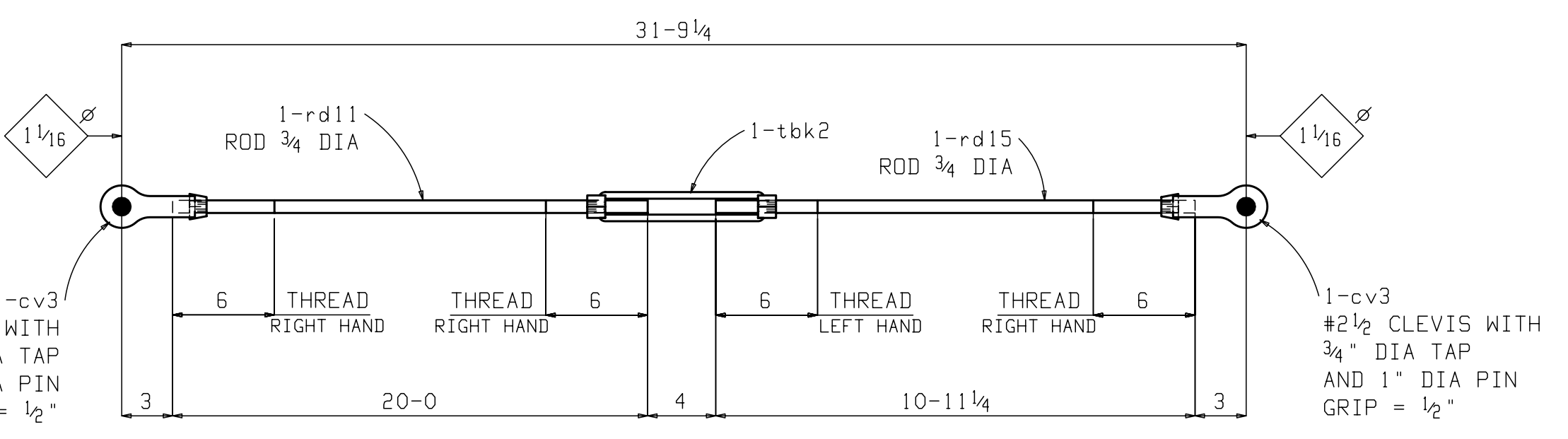
4 ROD BRACES 4HB2

FIELD BOLTS:
(8) - 1/2 HILLSIDE WASHERS
(8) - 1/2 HD WASHERS
(8) - 1/2 HARDENED NUTS



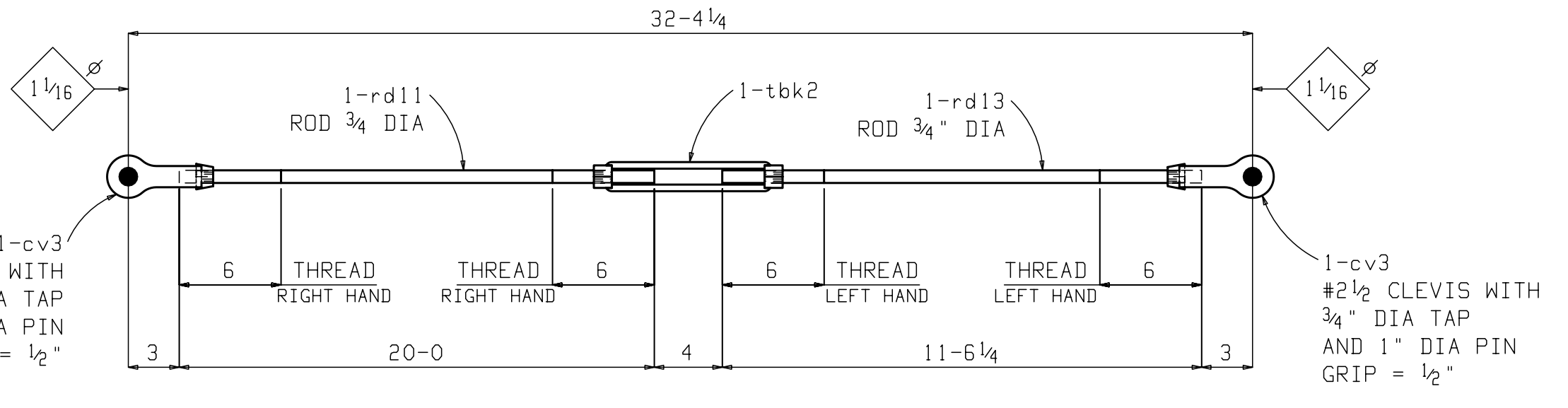
2 ROD BRACES 4HB3

FIELD BOLTS:
(4) - 1/2 HILLSIDE WASHERS
(4) - 1/2 HD WASHERS
(4) - 1/2 HARDENED NUTS



2 ROD BRACES 4VB1

FIELD BOLTS:
(4) - 1" DIA x 2 CLEVIS PIN
W/ COTTER



4 ROD BRACES 4VB2

FIELD BOLTS:
(8) - 1" DIA x 2 CLEVIS PIN
W/ COTTER

BILL OF MATERIAL

Seq Num	Quan. Total	Main Mark	Quan. Unit	Shape	Length	Minor Mark	Remarks	Steel Grade	Weight Total
1	6	4B1		BEAM					180
	6		1	C4x5.4	5 3	4B1		A36	170
	6		1	PL 3/8x2 1/4	0 4	p25		A36	6
	6		1	PL 3/8x2 1/4	0 3	p27		A36	4
				FIELD BOLTS					
	12			5/8 Dia A325	0 2		+1HD WASH		
1	12	4M1		CLAMP ASSEMBLY					247
	12		1	PL 1/2x6	1 2	p14		A36	143
	12		1	PL 1/2x3	1 2	p12		A36	71
	12		1	RD 1 5/16	1 2	rd1		A36	33
				FIELD BOLTS					
	24			3/4 Dia A490	0 3 1/2		+2HD WASH		
1	2	4VB1		ROD BRACE					107
	2		1	RD 3/4	10 11 1/4	4VB1L		A36	33
	2		1	RD 3/4	20 0	4VB1		A36	60
	2		1	TB 3/4x9	0 11 1/8	tbk2	TURNBUCKLE		4
	4		2	CV 2 1/2	0 4	cv3	CLEVIS		10
1	4	4VB2		ROD BRACE					217
	4		1	RD 3/4	11 6 1/4	4VB2L		A36	69
	4		1	RD 3/4	20 0	4VB2		A36	120
	4		1	TB 3/4x9	0 11 1/8	tbk2			7
	8		2	CV 2 1/2	0 4	cv3			20
1	4	4HB1		ROD BRACE					55
	4		1	RD 1/2	16 9	4HB1L		A36	45
	4		1	RD 1/2	4 0	4HB1		A36	11
	4		1	TB 1/2x9		tbk1			
1	4	4HB2		ROD BRACE					55
	4		1	RD 1/2	16 7 1/2	4HB2L		A36	44
	4		1	RD 1/2	4 0	4HB2		A36	11
	4		1	TB 1/2x9		tbk1			
1	2	4HB3		ROD BRACE					26
	2		1	RD 1/2	15 9 1/4	4HB3L		A36	21
	2		1	RD 1/2	4 0	4HB3		A36	5
	2		1	TB 1/2x9		tbk1			

Total weight : 888

REFERENCE DRWG./LOCATION	O	10-27-13	ISSUED FOR SHOP AND FIELD
E1-E2	B	10-22-13	ISSUED FOR APPROVAL
	A	10-19-13	ISSUED FOR APPROVAL
MATERIAL (UNLESS NOTED)	REV.	DATE	DESCRIPTION
A36			
SURFACE PREPARATION			
SP3			
SHOP PAINT (UNLESS NOTED)			
1 S/C BMW WHITE			
SHOP CONNECTIONS/ELECTRODES			
E70XX L.H.			
ALL SHOP BOLTS TO BE HAND TIGHT			
FIELD CONNECTIONS			
3/4 A325			
HOLES (U.N.)			
13/16			
432 McNEELY RD. P.O. BOX 51127		Telephone (864)295-1760	
Friedmont, S.C. 29573		Fax (864)299-8809	
JOB HALL 52 - NEW FLUID FILL AT AE-32			
LOCATION	SPARTANBURG, SC		
CUSTOMER	SMITH ENGINEERING & CONSTRUCTION, LLC		
DRWG. COVERS	DETAILS		
DRAWN BY	PALMETTO STRUCTURAL DETAILING, LLC		
CHECKER	JAM	DATE	10-27
PROJECT MANAGER	MIKE WILSON		
JOB #	13-1481	DRWG. #	F4

PLOT DATE/TIME: 10/27/13 12:48:57 PM